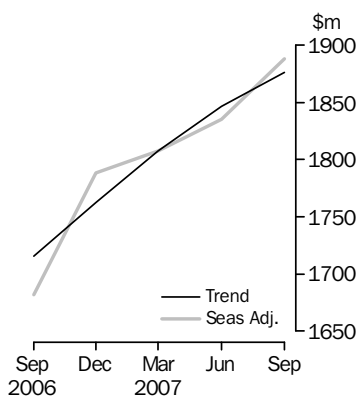


**TOURIST ACCOMMODATION AUSTRALIA**

EMBARGO: 11.30AM (CANBERRA TIME) TUES 8 JAN 2008

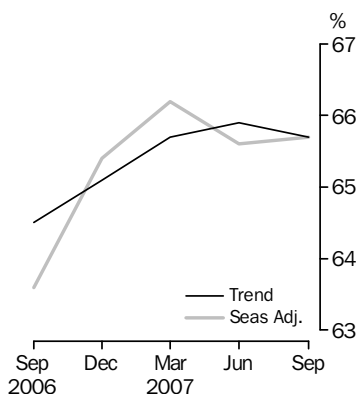
**ACCOMMODATION TAKINGS**

Australia



**ROOM OCCUPANCY RATE**

Australia



**I N Q U I R I E S**

For further information about these and related statistics, contact the National Information and Referral Service on 1300 135 070.

**KEY FIGURES**

**ACCOMMODATION WITH 15 ROOMS OR MORE**

	<i>Jun Qtr 07</i>	<i>Sep Qtr 07</i>	<i>Jun Qtr 07 to Sep Qtr 07</i>	<i>Sep Qtr 06 to Sep Qtr 07</i>
<b>Trend</b>				
Takings from accommodation (\$m)	1 846.4	1 876.1	1.6 %	9.4 %
Room occupancy rate (%)	65.9	65.7	-0.2 pts	1.2 pts
<b>Seasonally Adjusted</b>				
Takings from accommodation (\$m)	1 835.3	1 888.3	2.9 %	12.3 %
Room occupancy rate (%)	65.6	65.7	0.1 pts	2.1 pts

Note: Hotels, motels and serviced apartments

**KEY POINTS**

**ACCOMMODATION TAKINGS**

- In September quarter 2007, the trend estimate of total accommodation takings for hotels, motels and serviced apartments with 15 or more rooms increased by 1.6% to \$1,876.1 million compared with June quarter 2007.
- Over the same period, the seasonally adjusted estimate increased by 2.9% to \$1,888.3 million.

**ROOM OCCUPANCY RATE**

- The trend estimate of the room occupancy rate for hotels, motels and serviced apartments with 15 or more rooms decreased by 0.2 percentage points to 65.7% for September quarter 2007 compared to June quarter 2007. Previously it had increased for seven consecutive quarters.
- The seasonally adjusted estimate increased 0.1 percentage points to 65.7% for September quarter 2007 compared with June quarter 2007.

# NOTES

## FORTHCOMING ISSUES

<i>ISSUE (Quarter)</i>	<i>RELEASE DATE</i>
December 2007	28 March 2008
March 2008	30 June 2008



## ABOUT THIS ISSUE

This issue presents results from the September quarter 2007 Survey of Tourist Accommodation (STA) for the following categories of establishments:

- licensed hotels and resorts with facilities and 5 or more rooms
- motels, private hotels and guest houses with facilities and 5 or more rooms
- serviced apartments with 5 or more units
- caravan parks with 40 or more powered sites
- holiday flats, units and houses of letting entities with 15 or more rooms or units
- visitor hostels with 25 or more bed spaces.

Brian Pink  
Australian Statistician

# CONTENTS

	<i>page</i>
Abbreviations . . . . .	4
Summary of Findings . . . . .	5

## TABLES

### ORIGINAL, SEASONALLY ADJUSTED AND TREND

<b>1</b> Hotels, motels and serviced apartments with 15 or more rooms . . . . .	10
---	----

### SUMMARY

<b>2</b> Hotels, motels and serviced apartments . . . . .	12
<b>3</b> Licensed hotels and resorts . . . . .	14
<b>4</b> Motels, private hotels and guest houses . . . . .	16
<b>5</b> Serviced apartments . . . . .	18
<b>6</b> Caravan parks . . . . .	20
<b>7</b> Holiday flats, units and houses . . . . .	22
<b>8</b> Visitor hostels . . . . .	24

### STAR GRADING

<b>9</b> Hotels, motels and serviced apartments with 5-14 rooms . . . . .	25
<b>10</b> Hotels, motels and serviced apartments with 15 or more rooms . . . . .	27
<b>11</b> Hotels, motels and serviced apartments with 5 or more rooms . . . . .	29

### STATES AND TERRITORIES

<b>12</b> Hotels, motels and serviced apartments with 5-14 rooms . . . . .	31
<b>13</b> Hotels, motels and serviced apartments with 15 or more rooms . . . . .	34
<b>14</b> Hotels, motels and serviced apartments with 5 or more rooms . . . . .	37
<b>15</b> Caravan parks, short-term . . . . .	40
<b>16</b> Caravan parks, long-term . . . . .	43
<b>17</b> Caravan parks, total . . . . .	46
<b>18</b> Holiday flats, units and houses, real estate agents . . . . .	49
<b>19</b> Holiday flats, units and houses, other letting entities . . . . .	51
<b>20</b> Holiday flats, units and houses, total . . . . .	53
<b>21</b> Visitor hostels . . . . .	55

## OTHER INFORMATION

Explanatory Notes . . . . .	57
Glossary . . . . .	64

## ABBREVIATIONS

---

'000	thousand
\$'000	thousand dollars
\$m	million dollars
AAA	Australian Automobile Association
ABS	Australian Bureau of Statistics
ACT	Australian Capital Territory
ASGC	Australian Standard Geographical Classification
cat. no.	Catalogue number
GST	goods and services tax
no.	number
NSW	New South Wales
NT	Northern Territory
pts	percentage points
qtr	quarter
Qld	Queensland
SA	South Australia
SLA	statistical local area
STA	Survey of Tourist Accommodation
Tas.	Tasmania
Vic.	Victoria
WA	Western Australia

## SUMMARY OF FINDINGS

### ORIGINAL

#### *Hotels, motels and serviced apartments*

This summary contains key findings for original estimates. While trend and seasonally adjusted data are only available for hotels, motels and serviced apartments with 15 or more rooms, original estimates have two additional data series comprising hotels, motels and serviced apartments with 5 to 14 rooms and 5 or more rooms.

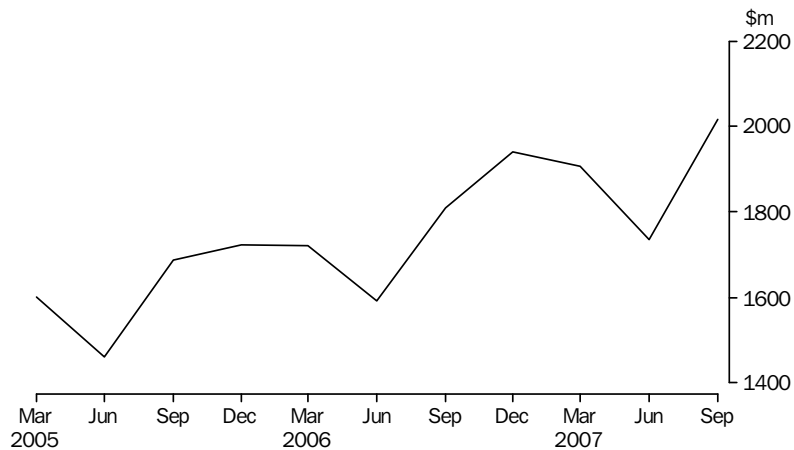
Original series are impacted by seasonal variations and irregular or non-seasonal influences and comparisons between quarters should be made with caution.

### ACCOMMODATION TAKINGS

In September quarter 2007, accommodation takings were \$2,016.0 million for hotels, motels and serviced apartments with 5 or more rooms, comprising \$1,942.6 million for hotels, motels and serviced apartments with 15 or more rooms and \$73.4 million for hotels, motels and serviced apartments with 5 to 14 rooms.

Accommodation takings in September quarter 2007 for hotels, motels and serviced apartments with 15 or more rooms were highest in New South Wales (\$615.6 million) and Queensland (\$560.0 million).

### TAKINGS FROM ACCOMMODATION, Hotels, motels and serviced apartments with 5 or more rooms—Australia



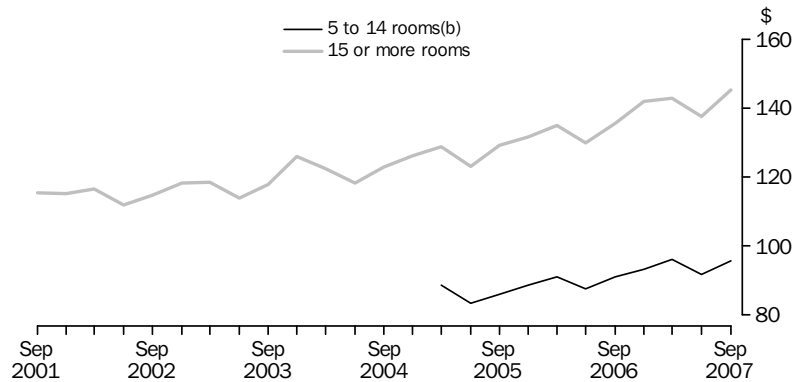
The September quarter 2007 average takings per room night occupied were \$142.48 for establishments with 5 or more rooms. This was heavily influenced by hotels, motels and serviced apartments with 15 or more rooms which contribute 96.4% to total takings, and had an average takings per room night occupied of \$145.18. The average for 5 to 14 room establishments was \$95.58.

## SUMMARY OF FINDINGS *continued*

Hotels, motels and serviced apartments *continued*

### ACCOMMODATION TAKINGS *continued*

#### AVERAGE TAKINGS (a), Australia



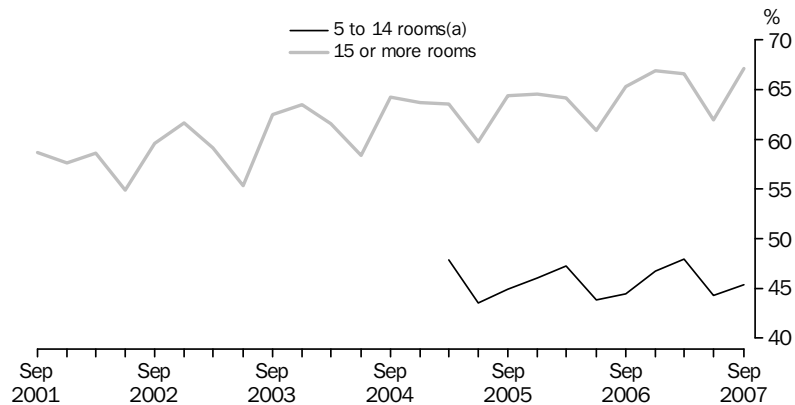
(a) Per room night occupied.

(b) These establishments were included in the survey from March 2005 onwards.

#### ROOM OCCUPANCY RATE

The room occupancy rate for hotels, motels and serviced apartments with 5 or more rooms was 65.4% in September quarter 2007. For hotels, motels and serviced apartments with 15 or more rooms, the room occupancy rate was 67.1%, while demand for 5 to 14 room hotels, motels and serviced apartments was lower, as reflected by a room occupancy rate of 45.4%.

#### ROOM OCCUPANCY RATE, Australia



(a) These establishments were included in the survey from March 2005 onwards.

#### ROOM NIGHTS OCCUPIED

Total room nights occupied were 14.1 million in September quarter 2007 for hotels, motels and serviced apartments with 5 or more rooms. For hotels, motels and serviced apartments with 15 or more rooms, room nights occupied were 13.4 million in September quarter 2007, while for establishments with 5 to 14 rooms, room nights occupied were 0.8 million.

## SUMMARY OF FINDINGS *continued*

### *Hotels, motels and serviced apartments continued*

#### ROOM NIGHTS OCCUPIED *continued*

New South Wales contributed the highest proportion of occupied rooms for hotels, motels and serviced apartments with 15 or more rooms (30.3%) and Queensland contributed 29.5%.

#### AVERAGE LENGTH OF STAY

The average length of stay in September quarter 2007 for hotels, motels and serviced apartments with both 5 or more rooms and 15 or more rooms was 2.2 days. For establishments with 5 to 14 rooms, the average length of stay was 1.8 days.

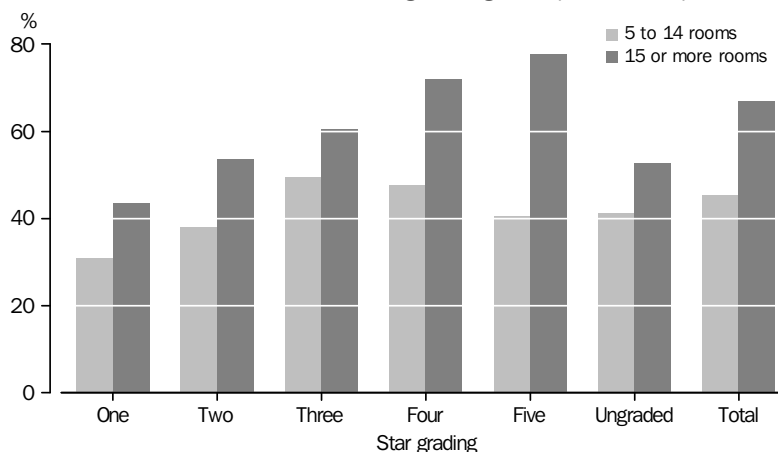
Queensland (2.6 days) reported the longest average length of stay for hotels, motels and serviced apartments with 15 or more rooms, followed by Western Australia (2.4 days). The shortest average length of stay was in the Northern Territory (1.8 days).

#### STAR GRADING

In September quarter 2007, the room occupancy rate for five-star hotels, motels and serviced apartments with 5 or more rooms was 77.6% compared with 39.7% for one-star. For hotels, motels and serviced apartments with 15 or more rooms, the room occupancy rate was 77.8% for five-star establishments compared with 43.7% for one-star establishments.

In the 5-14 rooms category, three-star (49.5%) and four-star (47.7%) establishments had the highest room occupancy rates in September quarter 2007, compared with one-star establishments at 30.9%.

#### ROOM OCCUPANCY RATE, Star grading—September quarter 2007



In September quarter 2007, the average takings per room night occupied for five-star hotels, motels and serviced apartments with 5 or more rooms was \$233.06 compared with \$70.10 for one-star. In the 15 or more rooms category, the average takings was \$233.01 for five-star establishments compared with \$75.15 for one-star establishments.

For establishments with 5 to 14 rooms, five-star establishments had the highest average takings of \$252.01, compared with one-star establishments at \$54.22.

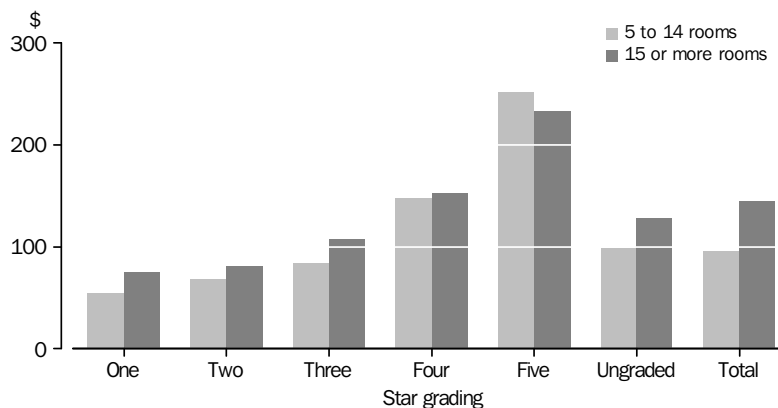
## SUMMARY OF FINDINGS *continued*

*Hotels, motels and serviced apartments continued*

### STAR GRADING *continued*

For the five-star category, average takings for establishments with 5 to 14 rooms was \$19.00 higher than the average takings for the 15 or more room establishments in September quarter 2007.

### AVERAGE TAKINGS (a), Star grading—September quarter 2007



(a) Per room night occupied

*Caravan parks, holiday flats, units and houses, and visitor hostels*

### ACCOMMODATION TAKINGS

In September quarter 2007, accommodation takings for caravan parks were \$239.9 million. New South Wales (\$72.4 million) had the highest accommodation takings for all caravan parks for September quarter 2007, contributing 30.2% of the total.

Short-term caravan park takings were \$198.3 million in September quarter 2007 which was 82.6% of total caravan park takings.

Accommodation takings for holiday flats, units and houses were \$150.0 million in September quarter 2007. Real estate takings accounted for 22.4% of total holiday flats, units and houses takings, the rest being for other letting entities.

For visitor hostels, accommodation takings were \$51.3 million in September quarter 2007.

### OCCUPANCY RATE

The site occupancy rate for all caravan parks in September quarter 2007 was 53.8%. Short-term caravan park occupancy was 50.4% and long-term caravan park occupancy was 76.4%.

For holiday flats, units and houses, the unit occupancy rate was 48.0% in September quarter 2007.

The bed occupancy rate for visitor hostels in September quarter 2007 was 47.5%. The Northern Territory, Queensland and Western Australia had the highest bed occupancy rates for visitor hostels in September quarter 2007 with 63.1%, 57.3% and 49.5% respectively.

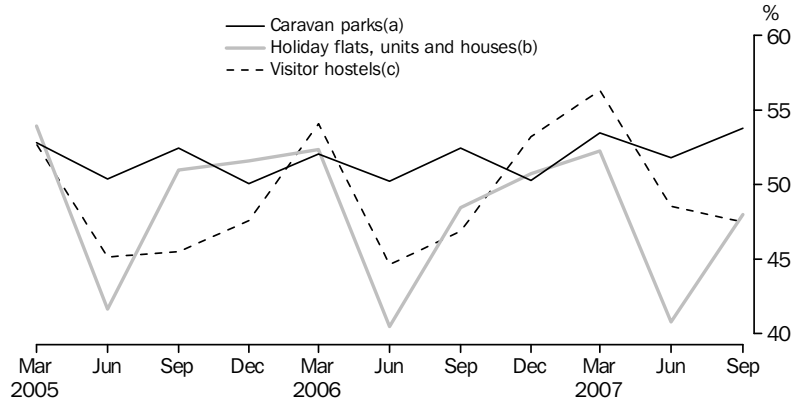


**SUMMARY OF FINDINGS** *continued*

*Caravan parks, holiday flats, units and houses, and visitor hostels continued*

OCCUPANCY RATE *continued*

OCCUPANCY RATES, Australia



(a) Site occupancy rate. (b) Unit occupancy rate. (c) Bed occupancy rate.

Period	ORIGINAL		SEASONALLY ADJUSTED		TREND	
	Takings from accommodation	Room occupancy rate	Takings from accommodation	Room occupancy rate	Takings from accommodation	Room occupancy rate
	\$m	%	\$m	%	\$m	%
<b>2004</b>						
March Quarter	1 398.6	61.6	1 373.4	61.1	1 403.4	61.7
June Quarter	1 277.5	58.4	1 406.7	61.8	1 409.1	61.9
September Quarter	1 485.7	64.2	1 440.6	62.6	1 425.6	62.2
December Quarter	1 513.0	63.7	1 443.8	62.2	1 459.4	62.7
<b>2005</b>						
March Quarter	1 525.3	63.6	1 499.3	63.2	1 498.0	63.0
June Quarter	1 395.0	59.7	1 543.5	63.3	1 535.5	63.1
September Quarter	1 618.2	64.4	1 572.0	62.9	1 563.6	63.0
December Quarter	1 650.9	64.5	1 570.9	62.7	1 591.9	63.2
<b>2006</b>						
March Quarter	1 649.2	64.2	1 632.3	64.1	1 624.5	63.7
June Quarter	1 526.5	60.9	1 682.9	64.5	1 666.5	64.1
September Quarter	1 740.5	65.3	1 681.7	63.6	1 715.3	64.5
December Quarter	1 866.6	66.9	1 788.2	65.4	1 762.4	65.1
<b>2007</b>						
March Quarter	1 832.3	66.6	1 807.3	66.2	1 807.7	65.7
June Quarter	1 667.1	61.9	1 835.3	65.6	1 846.4	65.9
September Quarter	1 942.6	67.1	1 888.3	65.7	1 876.1	65.7

*continued*

Period	ORIGINAL		SEASONALLY ADJUSTED		TREND	
	Takings change from prev. qtr	Room occupancy change from prev. qtr	Takings change from prev. qtr	Room occupancy change from prev. qtr	Takings change from prev. qtr	Room occupancy change from prev. qtr
	%	pts	%	pts	%	pts
<b>2004</b>						
March Quarter	-6.7	-1.9	-4.0	-0.8	1.4	0.3
June Quarter	-8.7	-3.2	2.4	0.7	0.4	0.2
September Quarter	16.3	5.8	2.4	0.8	1.2	0.3
December Quarter	1.8	-0.5	0.2	-0.4	2.4	0.5
<b>2005</b>						
March Quarter	0.8	-0.2	3.8	1.0	2.6	0.3
June Quarter	-8.5	-3.8	3.0	0.1	2.5	0.1
September Quarter	16.0	4.7	1.8	-0.4	1.8	-0.1
December Quarter	2.0	0.1	-0.1	-0.2	1.8	0.2
<b>2006</b>						
March Quarter	-0.1	-0.3	3.9	1.4	2.0	0.5
June Quarter	-7.4	-3.3	3.1	0.4	2.6	0.4
September Quarter	14.0	4.4	-0.1	-0.9	2.9	0.4
December Quarter	7.2	1.6	6.3	1.8	2.7	0.6
<b>2007</b>						
March Quarter	-1.8	-0.3	1.1	0.8	2.6	0.6
June Quarter	-9.0	-4.7	1.5	-0.6	2.1	0.2
September Quarter	16.5	5.2	2.9	0.1	1.6	-0.2

## SUMMARY OF HOTELS, MOTELS AND SERVICED APARTMENTS, Australia

<i>Period</i>	<i>Establishments</i> no.	<i>Rooms</i> no.	<i>Bed spaces</i> no.	<i>Persons employed</i> no.	<i>Room nights occupied</i> '000	<i>Room occupancy rate</i> %
.....						
HOTELS MOTELS AND SERVICED APARTMENTS WITH 5 TO 14 ROOMS						
<b>2006</b>						
September Quarter	1 946	18 609	54 614	11 477	758.3	44.4
December Quarter	1 937	18 631	54 672	11 894	792.3	46.7
<b>2007</b>						
March Quarter	1 919	18 441	54 121	11 542	785.1	47.9
June Quarter	1 918	18 464	54 171	11 604	739.0	44.3
September Quarter	1 921	18 475	54 293	11 756	768.3	45.4
<b>Year ended September 2006</b>	..	..	..	..	3 103.8	45.4
<b>Year ended September 2007</b>	..	..	..	..	3 084.7	46.1
.....						
HOTELS MOTELS AND SERVICED APARTMENTS WITH 15 OR MORE ROOMS						
<b>2006</b>						
September Quarter	4 186	213 768	614 417	116 839	12 829.8	65.3
December Quarter	4 195	215 172	619 120	116 317	13 161.0	66.9
<b>2007</b>						
March Quarter	4 205	215 763	619 187	115 703	12 833.8	66.6
June Quarter	4 206	216 007	618 733	115 340	12 128.2	61.9
September Quarter	4 220	216 845	620 769	115 439	13 380.7	67.1
<b>Year ended September 2006</b>	..	..	..	..	49 347.5	63.7
<b>Year ended September 2007</b>	..	..	..	..	51 503.8	65.7
.....						
HOTELS MOTELS AND SERVICED APARTMENTS WITH 5 OR MORE ROOMS						
<b>2006</b>						
September Quarter	6 132	232 377	669 031	128 316	13 588.1	63.7
December Quarter	6 132	233 803	673 792	128 211	13 953.3	65.3
<b>2007</b>						
March Quarter	6 124	234 204	673 308	127 245	13 618.9	65.1
June Quarter	6 124	234 471	672 904	126 944	12 867.2	60.6
September Quarter	6 141	235 320	675 062	127 195	14 149.1	65.4
<b>Year ended September 2006</b>	..	..	..	..	52 451.3	62.3
<b>Year ended September 2007</b>	..	..	..	..	54 588.5	64.1
.....						
..	not applicable					

<i>Period</i>	<i>Guest nights occupied</i> '000	<i>Bed occupancy rate</i> %	<i>Guest arrivals</i> '000	<i>Average length of stay</i> days	<i>Takings from accommodation</i> \$'000
.....					
HOTELS MOTELS AND SERVICED APARTMENTS WITH 5 TO 14 ROOMS					
<b>2006</b>					
September Quarter	1 392.1	27.8	776.9	1.8	69 022
December Quarter	1 490.5	30.0	824.4	1.8	73 934
<b>2007</b>					
March Quarter	1 492.1	31.1	811.0	1.8	75 437
June Quarter	1 337.5	27.3	750.8	1.8	67 716
September Quarter	1 403.4	28.2	786.7	1.8	73 442
<b>Year ended September 2006</b>	<b>5 768.2</b>	<b>28.7</b>	<b>3 196.2</b>	<b>1.8</b>	<b>278 048</b>
<b>Year ended September 2007</b>	<b>5 723.5</b>	<b>29.2</b>	<b>3 173.0</b>	<b>1.8</b>	<b>290 529</b>
.....					
HOTELS MOTELS AND SERVICED APARTMENTS WITH 15 OR MORE ROOMS					
<b>2006</b>					
September Quarter	22 585.1	40.0	10 079.5	2.2	1 740 492
December Quarter	23 485.3	41.5	10 346.0	2.3	1 866 614
<b>2007</b>					
March Quarter	22 898.5	41.5	9 842.1	2.3	1 832 321
June Quarter	20 910.5	37.3	9 482.9	2.2	1 667 135
September Quarter	23 372.8	41.0	10 483.5	2.2	1 942 581
<b>Year ended September 2006</b>	<b>87 450.9</b>	<b>39.6</b>	<b>38 476.0</b>	<b>2.3</b>	<b>6 567 088</b>
<b>Year ended September 2007</b>	<b>90 667.1</b>	<b>40.3</b>	<b>40 154.5</b>	<b>2.3</b>	<b>7 308 651</b>
.....					
HOTELS MOTELS AND SERVICED APARTMENTS WITH 5 OR MORE ROOMS					
<b>2006</b>					
September Quarter	23 977.1	39.0	10 856.4	2.2	1 809 514
December Quarter	24 975.7	40.6	11 170.4	2.2	1 940 549
<b>2007</b>					
March Quarter	24 390.7	40.6	10 653.2	2.3	1 907 758
June Quarter	22 248.0	36.5	10 233.7	2.2	1 734 851
September Quarter	24 776.2	39.9	11 270.2	2.2	2 016 023
<b>Year ended September 2006</b>	<b>93 219.1</b>	<b>38.7</b>	<b>41 672.2</b>	<b>2.2</b>	<b>6 845 136</b>
<b>Year ended September 2007</b>	<b>96 390.7</b>	<b>39.4</b>	<b>43 327.5</b>	<b>2.2</b>	<b>7 599 180</b>

## SUMMARY OF LICENSED HOTELS AND RESORTS, Australia

<i>Period</i>	<i>Establishments</i>	<i>Rooms</i>	<i>Bed spaces</i>	<i>Persons employed</i>	<i>Room nights occupied</i>	<i>Room occupancy rate</i>	<i>Guest nights occupied</i>	<i>Bed occupancy rate</i>
	no.	no.	no.	no.	'000	%	'000	%
.....								
LICENSED HOTELS WITH 5 TO 14 ROOMS								
<b>2006</b>								
September Quarter	452	4 291	11 490	6 678	143.3	36.3	221.6	21.0
December Quarter	445	4 249	11 416	6 914	147.0	37.8	229.1	22.0
<b>2007</b>								
March Quarter	443	4 219	11 209	6 759	148.0	39.2	233.7	23.3
June Quarter	441	4 210	11 146	6 829	140.5	36.7	212.1	20.9
September Quarter	446	4 268	11 377	6 873	144.6	37.0	217.4	20.9
<b>Year ended September 2006</b>	..	..	..	..	594.6	37.4	917.8	21.5
<b>Year ended September 2007</b>	..	..	..	..	580.1	37.7	892.2	21.8
.....								
LICENSED HOTELS WITH 15 OR MORE ROOMS								
<b>2006</b>								
September Quarter	820	80 350	211 092	71 662	5 219.8	70.6	8 388.0	43.2
December Quarter	823	80 560	212 826	71 510	5 387.2	73.1	8 816.8	45.4
<b>2007</b>								
March Quarter	831	81 048	213 415	71 551	5 275.6	72.9	8 581.4	45.1
June Quarter	828	80 906	212 294	71 185	4 894.6	66.8	7 717.7	40.2
September Quarter	832	81 334	213 573	70 778	5 402.7	72.2	8 662.6	44.1
<b>Year ended September 2006</b>	..	..	..	..	20 111.0	69.1	32 394.9	42.9
<b>Year ended September 2007</b>	..	..	..	..	20 960.1	71.3	33 778.5	43.7
.....								
LICENSED HOTELS WITH 5 OR MORE ROOMS								
<b>2006</b>								
September Quarter	1 272	84 641	222 582	78 340	5 363.1	68.9	8 609.6	42.0
December Quarter	1 268	84 809	224 242	78 424	5 534.2	71.4	9 045.9	44.2
<b>2007</b>								
March Quarter	1 274	85 267	224 624	78 310	5 423.6	71.3	8 815.1	44.0
June Quarter	1 269	85 116	223 440	78 014	5 035.1	65.3	7 929.8	39.2
September Quarter	1 278	85 602	224 950	77 651	5 547.3	70.5	8 880.0	42.9
<b>Year ended September 2006</b>	..	..	..	..	20 705.6	67.5	33 312.7	41.7
<b>Year ended September 2007</b>	..	..	..	..	21 540.1	69.6	34 670.7	42.6

.....

.. not applicable

<i>Period</i>	<i>Guest arrivals</i> '000	<i>Average length of stay</i> days	<i>Takings from accommodation</i> \$'000
---------------	-------------------------------	---------------------------------------	---

LICENSED HOTELS WITH 5 TO 14 ROOMS

<b>2006</b>			
September Quarter	132.1	1.7	9 605
December Quarter	133.7	1.7	10 332
<b>2007</b>			
March Quarter	134.4	1.7	10 638
June Quarter	119.3	1.8	9 649
September Quarter	128.1	1.7	10 401
<b>Year ended September 2006</b>	538.6	1.7	39 479
<b>Year ended September 2007</b>	515.4	1.7	41 019

LICENSED HOTELS WITH 15 OR MORE ROOMS

<b>2006</b>			
September Quarter	3 830.6	2.2	839 229
December Quarter	3 941.4	2.2	924 637
<b>2007</b>			
March Quarter	3 707.5	2.3	902 567
June Quarter	3 593.4	2.1	795 784
September Quarter	3 962.9	2.2	926 677
<b>Year ended September 2006</b>	14 415.1	2.2	3 182 504
<b>Year ended September 2007</b>	15 205.2	2.2	3 549 665

LICENSED HOTELS WITH 5 OR MORE ROOMS

<b>2006</b>			
September Quarter	3 962.7	2.2	848 834
December Quarter	4 075.1	2.2	934 969
<b>2007</b>			
March Quarter	3 841.9	2.3	913 205
June Quarter	3 712.7	2.1	805 433
September Quarter	4 091.0	2.2	937 077
<b>Year ended September 2006</b>	14 953.7	2.2	3 221 983
<b>Year ended September 2007</b>	15 720.7	2.2	3 590 684

## SUMMARY OF MOTELS, PRIVATE HOTELS AND GUEST HOUSES, Australia

<i>Period</i>	<i>Establishments</i> no.	<i>Rooms</i> no.	<i>Bed spaces</i> no.	<i>Persons employed</i> no.	<i>Room nights occupied</i> '000	<i>Room occupancy rate</i> %
.....						
<b>MOTELS AND GUEST HOUSES WITH 5 TO 14 ROOMS</b>						
<b>2006</b>						
September Quarter	1 162	11 458	32 223	3 796	474.6	45.1
December Quarter	1 156	11 455	32 158	3 904	490.5	47.2
<b>2007</b>						
March Quarter	1 140	11 295	31 782	3 756	484.3	48.5
June Quarter	1 139	11 304	31 841	3 711	462.0	45.3
September Quarter	1 138	11 291	31 794	3 801	478.3	46.2
<b>Year ended September 2006</b>	..	..	..	..	1 944.1	46.2
<b>Year ended September 2007</b>	..	..	..	..	1 915.1	46.8
.....						
<b>MOTELS AND GUEST HOUSES WITH 15 OR MORE ROOMS</b>						
<b>2006</b>						
September Quarter	2 482	86 566	250 771	30 195	4 613.5	58.0
December Quarter	2 479	86 859	250 488	29 629	4 682.0	59.1
<b>2007</b>						
March Quarter	2 481	86 910	249 928	29 338	4 542.0	58.6
June Quarter	2 476	86 944	249 858	29 404	4 431.4	56.3
September Quarter	2 480	87 091	250 487	29 921	4 808.1	60.1
<b>Year ended September 2006</b>	..	..	..	..	17 857.7	56.8
<b>Year ended September 2007</b>	..	..	..	..	18 463.4	58.5
.....						
<b>MOTELS AND GUEST HOUSES WITH 5 OR MORE ROOMS</b>						
<b>2006</b>						
September Quarter	3 644	98 024	282 994	33 991	5 088.1	56.5
December Quarter	3 635	98 314	282 646	33 533	5 172.5	57.8
<b>2007</b>						
March Quarter	3 621	98 205	281 710	33 094	5 026.3	57.5
June Quarter	3 615	98 248	281 699	33 115	4 893.4	55.0
September Quarter	3 618	98 382	282 281	33 722	5 286.3	58.5
<b>Year ended September 2006</b>	..	..	..	..	19 801.8	55.5
<b>Year ended September 2007</b>	..	..	..	..	20 378.5	57.2
.....						
..	not applicable					



<i>Period</i>	<i>Guest nights occupied</i>	<i>Bed occupancy rate</i>	<i>Guest arrivals</i>	<i>Average length of stay</i>	<i>Takings from accommodation</i>
	'000	%	'000	days	\$'000
.....					
MOTELS AND GUEST HOUSES WITH 5 TO 14 ROOMS					
<b>2006</b>					
September Quarter	836.9	28.3	521.4	1.6	42 803
December Quarter	878.0	30.2	546.0	1.6	44 633
<b>2007</b>					
March Quarter	875.4	31.3	533.0	1.6	45 238
June Quarter	804.5	28.1	504.7	1.6	41 528
September Quarter	841.5	28.9	525.1	1.6	44 858
<b>Year ended September 2006</b>	<b>3 484.9</b>	<b>29.2</b>	<b>2 156.2</b>	<b>1.6</b>	<b>171 940</b>
<b>Year ended September 2007</b>	<b>3 399.4</b>	<b>29.6</b>	<b>2 108.8</b>	<b>1.6</b>	<b>176 258</b>
.....					
MOTELS AND GUEST HOUSES WITH 15 OR MORE ROOMS					
<b>2006</b>					
September Quarter	7 950.4	34.5	4 373.4	1.8	475 250
December Quarter	8 062.0	35.3	4 456.6	1.8	486 120
<b>2007</b>					
March Quarter	7 836.1	35.2	4 264.7	1.8	482 021
June Quarter	7 439.2	32.9	4 096.5	1.8	462 327
September Quarter	8 157.0	35.4	4 519.4	1.8	527 771
<b>Year ended September 2006</b>	<b>30 807.9</b>	<b>33.9</b>	<b>17 005.0</b>	<b>1.8</b>	<b>1 799 292</b>
<b>Year ended September 2007</b>	<b>31 494.4</b>	<b>34.7</b>	<b>17 337.3</b>	<b>1.8</b>	<b>1 958 239</b>
.....					
MOTELS AND GUEST HOUSES WITH 5 OR MORE ROOMS					
<b>2006</b>					
September Quarter	8 787.3	33.8	4 894.8	1.8	518 053
December Quarter	8 940.0	34.7	5 002.7	1.8	530 753
<b>2007</b>					
March Quarter	8 711.5	34.8	4 797.7	1.8	527 259
June Quarter	8 243.7	32.4	4 601.2	1.8	503 855
September Quarter	8 998.6	34.7	5 044.5	1.8	572 629
<b>Year ended September 2006</b>	<b>34 292.8</b>	<b>33.4</b>	<b>19 161.2</b>	<b>1.8</b>	<b>1 971 232</b>
<b>Year ended September 2007</b>	<b>34 893.8</b>	<b>34.1</b>	<b>19 446.1</b>	<b>1.8</b>	<b>2 134 496</b>

## SUMMARY OF SERVICED APARTMENTS, Australia

<i>Period</i>	<i>Establishments</i>	<i>Rooms</i>	<i>Bed spaces</i>	<i>Persons employed</i>	<i>Room nights occupied</i>	<i>Room occupancy rate</i>
	no.	no.	no.	no.	'000	%
SERVICED APARTMENTS WITH 5 TO 14 ROOMS						
<b>2006</b>						
September Quarter	332	2 860	10 901	1 003	140.4	53.6
December Quarter	336	2 927	11 098	1 076	154.8	57.9
<b>2007</b>						
March Quarter	336	2 927	11 130	1 027	152.8	58.4
June Quarter	338	2 950	11 184	1 064	136.5	50.9
September Quarter	337	2 916	11 122	1 082	145.5	54.3
<b>Year ended September 2006</b>	..	..	..	..	565.1	54.4
<b>Year ended September 2007</b>	..	..	..	..	589.6	55.4
SERVICED APARTMENTS WITH 15 OR MORE ROOMS						
<b>2006</b>						
September Quarter	884	46 852	152 554	14 982	2 996.6	69.8
December Quarter	893	47 753	155 806	15 178	3 091.9	70.5
<b>2007</b>						
March Quarter	893	47 805	155 844	14 814	3 016.1	70.4
June Quarter	902	48 157	156 581	14 751	2 802.2	64.0
September Quarter	908	48 420	156 709	14 740	3 170.0	71.2
<b>Year ended September 2006</b>	..	..	..	..	11 378.8	67.5
<b>Year ended September 2007</b>	..	..	..	..	12 080.3	69.0
SERVICED APARTMENTS WITH 5 OR MORE ROOMS						
<b>2006</b>						
September Quarter	1 216	49 712	163 455	15 985	3 137.0	68.9
December Quarter	1 229	50 680	166 904	16 254	3 246.7	69.8
<b>2007</b>						
March Quarter	1 229	50 732	166 974	15 841	3 168.9	69.7
June Quarter	1 240	51 107	167 765	15 815	2 938.7	63.3
September Quarter	1 245	51 336	167 831	15 822	3 315.5	70.2
<b>Year ended September 2006</b>	..	..	..	..	11 943.8	66.7
<b>Year ended September 2007</b>	..	..	..	..	12 669.9	68.2

.. not applicable

SUMMARY OF SERVICED APARTMENTS, Australia *continued*

<i>Period</i>	<i>Guest nights occupied</i>	<i>Bed occupancy rate</i>	<i>Guest arrivals</i>	<i>Average length of stay</i>	<i>Takings from accommodation</i>
	'000	%	'000	days	\$'000
.....					
SERVICED APARTMENTS WITH 5 TO 14 ROOMS					
<b>2006</b>					
September Quarter	333.6	33.4	123.4	2.7	16 614
December Quarter	383.4	37.8	144.7	2.6	18 970
<b>2007</b>					
March Quarter	383.1	38.5	143.7	2.7	19 561
June Quarter	320.9	31.5	126.9	2.5	16 539
September Quarter	344.5	33.7	133.5	2.6	18 183
<b>Year ended September 2006</b>	<b>1 365.6</b>	<b>34.9</b>	<b>501.3</b>	<b>2.7</b>	<b>66 629</b>
<b>Year ended September 2007</b>	<b>1 431.9</b>	<b>35.4</b>	<b>548.8</b>	<b>2.6</b>	<b>73 252</b>
.....					
SERVICED APARTMENTS WITH 15 OR MORE ROOMS					
<b>2006</b>					
September Quarter	6 246.7	44.7	1 875.5	3.3	426 013
December Quarter	6 606.5	46.3	1 947.9	3.4	455 857
<b>2007</b>					
March Quarter	6 481.0	46.5	1 869.9	3.5	447 733
June Quarter	5 753.6	40.4	1 792.9	3.2	409 024
September Quarter	6 553.2	45.5	2 001.2	3.3	488 134
<b>Year ended September 2006</b>	<b>24 248.1</b>	<b>44.4</b>	<b>7 055.9</b>	<b>3.4</b>	<b>1 585 292</b>
<b>Year ended September 2007</b>	<b>25 394.3</b>	<b>44.7</b>	<b>7 611.9</b>	<b>3.3</b>	<b>1 800 748</b>
.....					
SERVICED APARTMENTS WITH 5 OR MORE ROOMS					
<b>2006</b>					
September Quarter	6 580.3	43.9	1 998.9	3.3	442 627
December Quarter	6 989.8	45.7	2 092.6	3.3	474 827
<b>2007</b>					
March Quarter	6 864.1	45.9	2 013.6	3.4	467 294
June Quarter	6 074.5	39.9	1 919.8	3.2	425 563
September Quarter	6 897.6	44.7	2 134.7	3.2	506 316
<b>Year ended September 2006</b>	<b>25 613.7</b>	<b>43.8</b>	<b>7 557.2</b>	<b>3.4</b>	<b>1 651 921</b>
<b>Year ended September 2007</b>	<b>26 826.1</b>	<b>44.0</b>	<b>8 160.7</b>	<b>3.3</b>	<b>1 873 999</b>

## CAPACITY

Period	Establishments no.	On-site vans no.	Other powered sites no.	Unpowered sites no.	Cabins, flats units and villas no.	Total capacity no.
CARAVAN PARKS, SHORT TERM (b)						
<b>2006</b>						
September Quarter	1 467	13 132	127 320	39 506	25 381	205 339
December Quarter	1 462	13 320	126 644	39 295	25 613	204 872
<b>2007</b>						
March Quarter	1 457	13 123	126 445	38 895	26 038	204 501
June Quarter	1 459	13 843	125 372	38 475	26 108	203 798
September Quarter	1 459	13 250	125 290	38 749	26 428	203 717
Year ended September 2006	..	..	..	..	..	..
Year ended September 2007	..	..	..	..	..	..
CARAVAN PARKS, LONG TERM (b)						
<b>2006</b>						
September Quarter	233	4 240	17 524	2 085	6 288	30 137
December Quarter	234	4 163	17 630	2 097	6 407	30 297
<b>2007</b>						
March Quarter	232	4 032	17 754	2 037	6 264	30 087
June Quarter	230	4 094	17 529	2 028	6 432	30 083
September Quarter	230	4 019	17 240	1 959	6 661	29 879
Year ended September 2006	..	..	..	..	..	..
Year ended September 2007	..	..	..	..	..	..
CARAVAN PARKS, TOTAL						
<b>2006</b>						
September Quarter	1 700	17 372	144 844	41 591	31 669	235 476
December Quarter	1 696	17 483	144 274	41 392	32 020	235 169
<b>2007</b>						
March Quarter	1 689	17 155	144 199	40 932	32 302	234 588
June Quarter	1 689	17 937	142 901	40 503	32 540	233 881
September Quarter	1 689	17 269	142 530	40 708	33 089	233 596
Year ended September 2006	..	..	..	..	..	..
Year ended September 2007	..	..	..	..	..	..

.. not applicable

(a) Comprising establishments with 40 or more powered sites and cabins, flats, units and villas

(b) For definitions of short-term and long-term caravan parks, see Glossary.

Period	Persons employed	Sites occupied by long-term guests	Other sites permanently reserved	Site nights occupied	Site occupancy rate	Takings from accommodation
	no.	no.	no.	'000	%	\$'000
.....						
<b>CARAVAN PARKS, SHORT TERM (b)</b>						
<b>2006</b>						
September Quarter	8 509	18 957	40 912	9 124.9	49.0	182 011
December Quarter	8 830	18 187	40 410	8 757.4	46.6	191 194
<b>2007</b>						
March Quarter	8 793	18 346	40 149	9 158.4	50.0	204 863
June Quarter	8 639	18 497	39 592	8 923.0	48.4	184 584
September Quarter	8 720	18 924	40 069	9 332.2	50.4	198 294
<b>Year ended September 2006</b>	..	..	..	35 677.1	47.7	714 923
<b>Year ended September 2007</b>	..	..	..	36 171.0	48.8	778 934
.....						
<b>CARAVAN PARKS, LONG TERM (b)</b>						
<b>2006</b>						
September Quarter	1 315	17 079	1 734	2 090.4	75.4	38 378
December Quarter	1 334	17 133	1 836	2 096.1	75.2	39 960
<b>2007</b>						
March Quarter	1 297	16 896	1 770	2 089.8	77.2	39 148
June Quarter	1 286	16 935	1 874	2 049.2	74.9	38 661
September Quarter	1 319	16 911	1 787	2 100.6	76.4	41 655
<b>Year ended September 2006</b>	..	..	..	8 302.4	75.0	147 984
<b>Year ended September 2007</b>	..	..	..	8 335.7	75.9	159 423
.....						
<b>CARAVAN PARKS, TOTAL</b>						
<b>2006</b>						
September Quarter	9 824	36 036	42 646	11 215.3	52.5	220 388
December Quarter	10 164	35 320	42 246	10 853.5	50.3	231 153
<b>2007</b>						
March Quarter	10 090	35 242	41 919	11 248.2	53.5	244 010
June Quarter	9 925	35 432	41 466	10 972.2	51.8	223 245
September Quarter	10 039	35 835	41 856	11 432.8	53.8	239 949
<b>Year ended September 2006</b>	..	..	..	43 979.5	51.2	862 906
<b>Year ended September 2007</b>	..	..	..	44 506.7	52.3	938 357

.. not applicable

(a) Comprising establishments with 40 or more powered sites and cabins, flats, units and villas

(b) For definitions of short-term and long-term caravan parks, see Glossary.

Period	CAPACITY				Bed spaces	Persons employed(b)	Unit nights occupied	Unit occupancy rate
	Letting entities(a)	Single bedroom	Multiple bedroom	Total				
	no.	no.	no.	no.	no.	no.	'000	%
REAL ESTATE AGENTS								
<b>2006</b>								
September Quarter	164	636	12 865	13 501	75 757	..	339.5	27.6
December Quarter	161	637	13 041	13 678	76 905	..	407.4	32.4
<b>2007</b>								
March Quarter	158	637	13 106	13 743	77 033	..	449.1	36.4
June Quarter	156	617	12 913	13 530	76 027	..	285.9	23.4
September Quarter	155	605	12 955	13 560	76 631	..	328.7	26.4
<b>Year ended September 2006</b>	..	..	..	..	..	..	1 582.9	31.4
<b>Year ended September 2007</b>	..	..	..	..	..	..	1 471.2	29.6
OTHER LETTING ENTITIES								
<b>2006</b>								
September Quarter	418	4 097	10 343	14 440	58 780	2 535	899.0	67.8
December Quarter	418	4 119	10 433	14 552	59 430	2 556	907.3	68.1
<b>2007</b>								
March Quarter	421	4 241	10 562	14 803	59 971	2 473	888.1	67.0
June Quarter	425	4 386	10 530	14 916	60 127	2 534	765.7	56.5
September Quarter	428	4 378	10 631	15 009	61 331	2 527	931.8	67.6
<b>Year ended September 2006</b>	..	..	..	..	..	..	3 390.7	64.3
<b>Year ended September 2007</b>	..	..	..	..	..	..	3 492.8	64.8
HOLIDAY FLATS AND UNITS								
<b>2006</b>								
September Quarter	582	4 733	23 208	27 941	134 537	..	1 238.5	48.4
December Quarter	579	4 756	23 474	28 230	136 335	..	1 314.7	50.8
<b>2007</b>								
March Quarter	579	4 878	23 668	28 546	137 004	..	1 337.2	52.2
June Quarter	581	5 003	23 443	28 446	136 154	..	1 051.7	40.8
September Quarter	583	4 983	23 586	28 569	137 962	..	1 260.5	48.0
<b>Year ended September 2006</b>	..	..	..	..	..	..	4 973.6	48.2
<b>Year ended September 2007</b>	..	..	..	..	..	..	4 964.0	47.9

.. not applicable

(b) Employment numbers exclude real estate agents and their employees.

(a) The number of owners, managers or real estate agents with 15 or more self-contained units.

<i>Period</i>	<i>Unit lettings</i> '000	<i>Average length of stay</i> days	<i>Takings from accommodation</i> \$'000
.....			
REAL ESTATE AGENTS			
<b>2006</b>			
September Quarter	61.3	5.5	32 234
December Quarter	87.6	4.7	41 800
<b>2007</b>			
March Quarter	77.6	5.8	50 314
June Quarter	55.3	5.2	26 113
September Quarter	59.4	5.5	33 643
<b>Year ended September 2006</b>	286.5	5.5	157 126
<b>Year ended September 2007</b>	279.8	5.3	151 870
.....			
OTHER LETTING ENTITIES			
<b>2006</b>			
September Quarter	299.2	3.0	107 934
December Quarter	323.8	2.8	116 195
<b>2007</b>			
March Quarter	301.1	2.9	110 895
June Quarter	275.0	2.8	87 828
September Quarter	312.7	3.0	116 381
<b>Year ended September 2006</b>	1 142.4	3.0	398 177
<b>Year ended September 2007</b>	1 212.7	2.9	431 300
.....			
HOLIDAY FLATS AND UNITS			
<b>2006</b>			
September Quarter	360.5	3.4	140 168
December Quarter	411.4	3.2	157 995
<b>2007</b>			
March Quarter	378.7	3.5	161 209
June Quarter	330.3	3.2	113 941
September Quarter	372.1	3.4	150 025
<b>Year ended September 2006</b>	1 428.9	3.5	555 303
<b>Year ended September 2007</b>	1 492.5	3.3	583 170

## SUMMARY OF VISITOR HOSTELS(a), Australia

<i>Period</i>	<i>Establishments</i>	<i>Bed spaces</i>	<i>Persons employed</i>	<i>Guest arrivals</i>	<i>Guest nights occupied</i>	<i>Bed occupancy rate</i>	<i>Average length of stay</i>	<i>Takings from accommodation</i>
	no.	no.	no.	no.	no.	%	days	\$'000
<b>2006</b>								
September Quarter	433	47 405	3 250	765 362	2 031 646	46.9	2.7	49 155
December Quarter	429	46 631	3 271	744 631	2 255 507	53.2	3.0	55 751
<b>2007</b>								
March Quarter	427	46 770	3 231	850 417	2 351 032	56.3	2.8	57 361
June Quarter	426	46 999	3 272	733 738	2 069 230	48.5	2.8	51 049
September Quarter	426	47 157	3 354	705 183	2 048 267	47.5	2.9	51 274
<b>Year ended September 2006</b>	..	..	..	3 132 488	8 394 053	48.3	2.7	197 522
<b>Year ended September 2007</b>	..	..	..	3 033 969	8 724 036	51.4	2.9	215 435

.. not applicable

(a) Comprising establishments with 25 or more bed spaces.



## STAR GRADING

<i>Period</i>	1	2	3	4	5	<i>Ungraded</i>	<i>Total</i>
---------------	---	---	---	---	---	-----------------	--------------

## ESTABLISHMENTS, CAPACITY AND EMPLOYMENT (no.)

**September Quarter 2006**

Establishments	77	304	858	381	20	306	1 946
Rooms	725	2 940	8 844	3 141	161	2 798	18 609
Bed spaces	1 839	8 524	26 356	9 504	368	8 023	54 614
Persons employed	817	2 508	3 602	1 426	100	3 024	11 477

**September Quarter 2007**

Establishments	74	304	854	384	16	289	1 921
Rooms	721	2 962	8 823	3 185	122	2 662	18 475
Bed spaces	1 826	8 528	26 169	9 719	265	7 786	54 293
Persons employed	889	2 523	3 826	1 476	79	2 963	11 756

## ROOM NIGHTS OCCUPIED ('000)

**2006**

<i>September Quarter</i>	18.7	102.8	390.2	134.4	5.1	107.2	758.3
--------------------------	------	-------	-------	-------	-----	-------	-------

**2007**

July	6.8	34.2	131.9	47.5	1.5	34.5	256.3
August	6.8	34.4	128.5	44.5	1.4	33.6	249.1
September	6.9	34.8	139.5	47.2	1.6	32.9	262.9
<i>September Quarter</i>	20.5	103.5	399.8	139.1	4.5	100.9	768.3

## ROOM OCCUPANCY RATE (%)

**2006**

<i>September Quarter</i>	28.0	38.0	48.1	46.8	34.7	41.7	44.4
--------------------------	------	------	------	------	------	------	------

**2007**

July	30.4	37.3	48.4	48.3	40.7	41.9	44.9
August	30.2	37.6	47.2	45.2	36.5	40.9	43.7
September	32.0	39.4	52.9	49.5	44.9	41.3	47.6
<i>September Quarter</i>	30.9	38.1	49.5	47.7	40.6	41.4	45.4

## GUEST NIGHTS OCCUPIED ('000)

**2006**

<i>September Quarter</i>	28.3	172.2	700.8	285.8	10.1	194.7	1 392.1
--------------------------	------	-------	-------	-------	------	-------	---------

**2007**

July	10.3	56.4	236.6	103.2	2.8	62.4	471.6
August	10.3	56.8	222.9	93.5	2.7	61.0	447.2
September	10.6	59.8	251.0	101.6	3.0	58.5	484.5
<i>September Quarter</i>	31.2	173.0	710.5	298.3	8.5	181.9	1 403.4

## BED OCCUPANCY RATE (%)

**2006**

<i>September Quarter</i>	16.7	22.0	29.0	32.8	29.9	26.4	27.8
--------------------------	------	------	------	------	------	------	------

**2007**

July	18.2	21.3	29.3	34.4	36.0	26.0	28.1
August	18.1	21.5	27.6	31.2	32.8	25.4	26.7
September	19.3	23.5	32.1	35.0	38.2	25.1	29.9
<i>September Quarter</i>	18.6	22.1	29.6	33.5	35.6	25.5	28.2

continued

Period	STAR GRADING						Total
	1	2	3	4	5	Ungraded	
GUEST ARRIVALS ('000)							
<b>2006</b>							
September Quarter	16.8	105.8	417.2	130.9	5.4	100.8	776.9
<b>2007</b>							
July	6.2	34.5	142.4	44.9	1.5	32.7	262.2
August	6.7	33.3	135.1	42.2	1.4	32.1	250.8
September	6.8	36.6	151.3	46.7	1.6	30.6	273.7
September Quarter	19.6	104.4	428.8	133.9	4.5	95.4	786.7
AVERAGE LENGTH OF STAY (days)							
<b>2006</b>							
September Quarter	1.7	1.6	1.7	2.2	1.9	1.9	1.8
<b>2007</b>							
July	1.7	1.6	1.7	2.3	1.9	1.9	1.8
August	1.5	1.7	1.6	2.2	1.9	1.9	1.8
September	1.6	1.6	1.7	2.2	1.9	1.9	1.8
September Quarter	1.6	1.7	1.7	2.2	1.9	1.9	1.8
TAKINGS FROM ACCOMMODATION (\$'000)							
<b>2006</b>							
September Quarter	987	6 762	31 621	18 525	1 120	10 008	69 022
<b>2007</b>							
July	358	2 320	11 050	7 048	387	3 461	24 624
August	375	2 345	10 727	6 556	361	3 457	23 822
September	377	2 397	11 788	6 969	388	3 077	24 995
September Quarter	1 110	7 063	33 564	20 574	1 137	9 994	73 442
AVERAGE TAKINGS PER ROOM NIGHT OCCUPIED (\$)							
<b>2006</b>							
September Quarter	52.81	65.81	81.05	137.86	218.13	93.37	91.02
<b>2007</b>							
July	52.60	67.76	83.81	148.47	259.05	100.40	96.06
August	55.57	68.13	83.49	147.45	261.93	102.91	95.63
September	54.51	68.81	84.53	147.70	237.19	93.56	95.07
September Quarter	54.22	68.24	83.96	147.88	252.01	99.01	95.58
AVERAGE TAKINGS PER ROOM NIGHT AVAILABLE (\$)							
<b>2006</b>							
September Quarter	14.80	25.00	38.97	64.56	75.61	38.95	40.43
<b>2007</b>							
July	16.01	25.27	40.55	71.67	105.53	42.10	43.13
August	16.79	25.61	39.39	66.65	95.57	42.06	41.75
September	17.43	27.14	44.72	73.17	106.42	38.62	45.27
September Quarter	16.74	25.99	41.52	70.47	102.43	40.95	43.37

Period	STAR GRADING						Total
	1	2	3	4	5	Ungraded	
ESTABLISHMENTS, CAPACITY AND EMPLOYMENT (no.)							
<b>September Quarter 2006</b>							
Establishments	51	297	2 085	1 439	105	209	4 186
Rooms	1 506	9 347	74 916	99 091	22 816	6 092	213 768
Bed spaces	4 943	26 988	219 318	289 880	56 644	16 644	614 417
Persons employed	566	3 787	25 743	50 265	33 134	3 344	116 839
<b>September Quarter 2007</b>							
Establishments	53	284	2 086	1 464	113	220	4 220
Rooms	1 600	8 676	75 992	100 471	23 432	6 674	216 845
Bed spaces	5 333	24 754	222 392	291 364	58 237	18 689	620 769
Persons employed	572	3 349	26 463	49 520	32 326	3 209	115 439
ROOM NIGHTS OCCUPIED ('000)							
<b>2006</b>							
September Quarter	56.4	431.5	3 988.1	6 461.7	1 599.0	293.2	12 829.8
<b>2007</b>							
July	22.9	145.4	1 400.9	2 209.8	553.2	108.2	4 440.4
August	22.9	141.2	1 387.6	2 234.8	573.7	110.2	4 470.4
September	18.5	141.3	1 432.2	2 223.7	549.6	104.6	4 470.0
September Quarter	64.3	427.9	4 220.7	6 668.4	1 676.5	323.0	13 380.7
ROOM OCCUPANCY RATE (%)							
<b>2006</b>							
September Quarter	40.7	50.2	57.9	71.1	76.2	52.3	65.3
<b>2007</b>							
July	46.1	54.1	59.6	71.0	76.3	52.3	66.2
August	46.2	52.5	59.0	71.8	79.0	53.2	66.6
September	38.6	54.3	62.9	73.7	78.2	52.2	68.7
September Quarter	43.7	53.6	60.5	72.2	77.8	52.6	67.1
GUEST NIGHTS OCCUPIED ('000)							
<b>2006</b>							
September Quarter	127.4	786.4	7 150.6	11 516.9	2 499.9	503.9	22 585.1
<b>2007</b>							
July	57.1	258.8	2 563.8	3 967.1	874.1	186.4	7 907.4
August	55.0	245.7	2 441.0	3 832.7	885.5	184.0	7 643.9
September	35.9	246.5	2 586.4	3 928.0	850.1	174.6	7 821.5
September Quarter	148.1	751.0	7 591.2	11 727.8	2 609.7	545.1	23 372.8
BED OCCUPANCY RATE (%)							
<b>2006</b>							
September Quarter	28.0	31.7	35.5	43.3	48.0	32.9	40.0
<b>2007</b>							
July	34.6	33.8	37.3	44.0	48.5	32.2	41.2
August	33.3	32.0	35.5	42.5	49.0	31.8	39.8
September	22.4	33.2	38.8	44.9	48.7	31.1	42.0
September Quarter	30.2	33.0	37.2	43.8	48.7	31.7	41.0

Period	STAR GRADING						Total
	1	2	3	4	5	Ungraded	
GUEST ARRIVALS ('000)							
<b>2006</b>							
September Quarter	55.1	441.3	3 587.7	4 708.0	1 071.8	215.5	10 079.5
<b>2007</b>							
July	28.2	151.5	1 258.4	1 621.9	363.6	77.5	3 501.1
August	24.2	142.9	1 230.1	1 608.4	371.8	76.0	3 453.4
September	19.2	146.0	1 299.1	1 631.6	355.6	77.6	3 529.0
September Quarter	71.5	440.3	3 787.6	4 861.9	1 091.0	231.1	10 483.5
AVERAGE LENGTH OF STAY (days)							
<b>2006</b>							
September Quarter	2.3	1.8	2.0	2.4	2.3	2.3	2.2
<b>2007</b>							
July	2.0	1.7	2.0	2.4	2.4	2.4	2.3
August	2.3	1.7	2.0	2.4	2.4	2.4	2.2
September	1.9	1.7	2.0	2.4	2.4	2.3	2.2
September Quarter	2.1	1.7	2.0	2.4	2.4	2.4	2.2
TAKINGS FROM ACCOMMODATION (\$'000)							
<b>2006</b>							
September Quarter	4 180	32 779	392 262	925 098	353 271	32 901	1 740 492
<b>2007</b>							
July	1 719	11 662	150 029	333 155	125 425	14 122	636 112
August	1 777	11 676	149 691	341 635	132 389	14 507	651 674
September	1 335	11 321	150 973	345 608	132 827	12 730	654 796
September Quarter	4 831	34 659	450 694	1 020 398	390 641	41 359	1 942 581
AVERAGE TAKINGS PER ROOM NIGHT OCCUPIED (\$)							
<b>2006</b>							
September Quarter	74.17	75.97	98.36	143.17	220.94	112.21	135.66
<b>2007</b>							
July	75.22	80.23	107.10	150.76	226.73	130.46	143.26
August	77.56	82.71	107.88	152.87	230.76	131.68	145.78
September	72.09	80.10	105.41	155.42	241.67	121.76	146.49
September Quarter	75.15	81.00	106.78	153.02	233.01	128.06	145.18
AVERAGE TAKINGS PER ROOM NIGHT AVAILABLE (\$)							
<b>2006</b>							
September Quarter	30.17	38.12	56.94	101.73	168.30	58.72	88.62
<b>2007</b>							
July	34.67	43.41	63.85	107.11	172.90	68.26	94.79
August	35.82	43.41	63.64	109.76	182.26	70.12	97.02
September	27.81	43.50	66.27	114.61	188.95	63.58	100.66
September Quarter	32.82	43.44	64.57	110.45	181.29	67.36	97.46

## STAR GRADING

<i>Period</i>	1	2	3	4	5	<i>Ungraded</i>	<i>Total</i>
---------------	---	---	---	---	---	-----------------	--------------

## ESTABLISHMENTS, CAPACITY AND EMPLOYMENT (no.)

## September Quarter 2006

Establishments	128	601	2 943	1 820	125	515	6 132
Rooms	2 231	12 287	83 760	102 232	22 977	8 890	232 377
Bed spaces	6 782	35 512	245 674	299 384	57 012	24 667	669 031
Persons employed	1 383	6 295	29 345	51 691	33 234	6 368	128 316

## September Quarter 2007

Establishments	127	588	2 940	1 848	129	509	6 141
Rooms	2 321	11 638	84 815	103 656	23 554	9 336	235 320
Bed spaces	7 159	33 282	248 561	301 083	58 502	26 475	675 062
Persons employed	1 461	5 872	30 289	50 996	32 405	6 172	127 195

## ROOM NIGHTS OCCUPIED ('000)

## 2006

<i>September Quarter</i>	75.1	534.2	4 378.3	6 596.1	1 604.1	400.4	13 588.1
--------------------------	------	-------	---------	---------	---------	-------	----------

## 2007

July	29.7	179.6	1 532.7	2 257.3	554.7	142.7	4 696.7
August	29.7	175.6	1 516.1	2 279.3	575.1	143.8	4 719.5
September	25.4	176.2	1 571.7	2 270.9	551.3	137.4	4 732.9
<i>September Quarter</i>	84.8	531.4	4 620.5	6 807.5	1 681.0	423.9	14 149.1

## ROOM OCCUPANCY RATE (%)

## 2006

<i>September Quarter</i>	36.6	47.3	56.9	70.3	75.9	49.0	63.7
--------------------------	------	------	------	------	------	------	------

## 2007

July	41.2	49.8	58.4	70.3	76.1	49.4	64.5
August	41.2	48.7	57.8	71.0	78.8	49.7	64.8
September	36.5	50.5	61.8	73.0	78.0	49.1	67.1
<i>September Quarter</i>	39.7	49.7	59.3	71.4	77.6	49.4	65.4

## GUEST NIGHTS OCCUPIED ('000)

## 2006

<i>September Quarter</i>	155.7	958.6	7 851.5	11 802.7	2 510.0	698.7	23 977.1
--------------------------	-------	-------	---------	----------	---------	-------	----------

## 2007

July	67.5	315.2	2 800.4	4 070.3	877.0	248.8	8 379.0
August	65.3	302.5	2 663.9	3 926.2	888.1	245.1	8 091.1
September	46.5	306.3	2 837.5	4 029.6	853.1	233.1	8 306.1
<i>September Quarter</i>	179.2	924.0	8 301.7	12 026.1	2 618.2	727.0	24 776.2

## BED OCCUPANCY RATE (%)

## 2006

<i>September Quarter</i>	24.9	29.3	34.8	42.9	47.9	30.8	39.0
--------------------------	------	------	------	------	------	------	------

## 2007

July	30.4	30.6	36.4	43.7	48.4	30.4	40.1
August	29.4	29.3	34.6	42.1	49.0	29.9	38.7
September	21.7	30.7	38.1	44.6	48.6	29.4	41.0
<i>September Quarter</i>	27.2	30.2	36.4	43.4	48.7	29.9	39.9

Period	STAR GRADING						Total
	1	2	3	4	5	Ungraded	
GUEST ARRIVALS ('000)							
<b>2006</b>							
September Quarter	71.9	547.1	4 004.9	4 839.0	1 077.2	316.3	10 856.4
<b>2007</b>							
July	34.3	186.0	1 400.8	1 666.8	365.2	110.2	3 763.3
August	30.9	176.2	1 365.2	1 650.6	373.2	108.1	3 704.2
September	26.0	182.6	1 450.4	1 678.4	357.2	108.2	3 802.7
September Quarter	91.1	544.8	4 216.5	4 995.8	1 095.5	326.5	11 270.2
AVERAGE LENGTH OF STAY (days)							
<b>2006</b>							
September Quarter	2.2	1.8	2.0	2.4	2.3	2.2	2.2
<b>2007</b>							
July	2.0	1.7	2.0	2.4	2.4	2.3	2.2
August	2.1	1.7	2.0	2.4	2.4	2.3	2.2
September	1.8	1.7	2.0	2.4	2.4	2.2	2.2
September Quarter	2.0	1.7	2.0	2.4	2.4	2.2	2.2
TAKINGS FROM ACCOMMODATION (\$'000)							
<b>2006</b>							
September Quarter	5 168	39 541	423 882	943 623	354 391	42 909	1 809 514
<b>2007</b>							
July	2 077	13 982	161 079	340 203	125 812	17 583	660 736
August	2 152	14 021	160 418	348 191	132 750	17 963	675 495
September	1 712	13 718	162 761	352 577	133 215	15 807	679 791
September Quarter	5 941	41 722	484 259	1 040 971	391 777	51 353	2 016 023
AVERAGE TAKINGS PER ROOM NIGHT OCCUPIED (\$)							
<b>2006</b>							
September Quarter	68.85	74.01	96.81	143.06	220.93	107.17	133.17
<b>2007</b>							
July	70.03	77.85	105.09	150.71	226.82	123.20	140.68
August	72.55	79.85	105.81	152.76	230.84	124.96	143.13
September	67.31	77.87	103.56	155.26	241.66	115.02	143.63
September Quarter	70.10	78.52	104.81	152.91	233.06	121.14	142.48
AVERAGE TAKINGS PER ROOM NIGHT AVAILABLE (\$)							
<b>2006</b>							
September Quarter	25.18	34.98	55.05	100.59	167.65	52.51	84.76
<b>2007</b>							
July	28.87	38.79	61.43	106.02	172.56	60.82	90.74
August	29.91	38.89	61.13	108.44	181.81	62.14	92.70
September	24.58	39.35	64.03	113.34	188.53	56.47	96.32
September Quarter	27.82	39.01	62.18	109.22	180.89	59.85	93.22

<i>Period</i>	<i>New South Wales</i>	<i>Victoria</i>	<i>Queensland</i>	<i>South Australia</i>	<i>Western Australia</i>	<i>Tasmania</i>	<i>Northern Territory</i>	<i>Australian Capital Territory</i>	<i>Australia</i>
ESTABLISHMENTS (no.)									
<b>2006</b>									
September Quarter	623	466	426	150	140	125	14	2	1 946
December Quarter	623	457	423	150	143	125	14	2	1 937
<b>2007</b>									
March Quarter	608	458	421	146	145	126	13	2	1 919
June Quarter	613	458	425	143	142	123	12	2	1 918
September Quarter	612	461	424	143	142	125	12	2	1 921
ROOMS (no.)									
<b>2006</b>									
September Quarter	6 127	4 464	4 230	1 426	1 178	np	152	np	18 609
December Quarter	6 148	4 405	4 236	1 437	1 211	1 025	np	np	18 631
<b>2007</b>									
March Quarter	6 005	4 400	4 201	1 399	1 241	1 034	np	np	18 441
June Quarter	6 066	4 411	4 222	1 374	1 221	np	130	np	18 464
September Quarter	6 050	4 417	4 228	1 378	1 218	np	130	np	18 475
BED SPACES (no.)									
<b>2006</b>									
September Quarter	17 855	12 710	13 191	3 895	3 600	np	459	np	54 614
December Quarter	17 987	12 464	13 302	3 917	3 666	2 832	np	np	54 672
<b>2007</b>									
March Quarter	17 431	12 494	13 184	3 666	3 990	2 887	np	np	54 121
June Quarter	17 631	12 518	13 215	3 582	3 963	np	380	np	54 171
September Quarter	17 542	12 671	13 240	3 643	3 905	np	378	np	54 293
PERSONS EMPLOYED (no.)									
<b>2006</b>									
September Quarter	3 130	2 590	2 348	1 674	912	np	64	np	11 477
December Quarter	3 316	2 547	2 310	1 869	991	798	np	np	11 894
<b>2007</b>									
March Quarter	3 058	2 549	2 240	1 826	1 030	784	np	np	11 542
June Quarter	3 148	2 556	2 288	1 746	1 005	np	56	np	11 604
September Quarter	3 135	2 555	2 350	1 842	982	np	52	np	11 756
ROOM NIGHTS OCCUPIED ('000)									
<b>2006</b>									
September Quarter	237.6	153.8	233.0	49.7	49.2	np	6.7	np	758.3
December Quarter	243.7	174.4	215.4	53.1	56.5	42.0	np	np	792.3
<b>2007</b>									
March Quarter	240.0	181.4	192.5	53.1	57.3	55.8	np	np	785.1
June Quarter	225.4	158.6	207.9	48.3	55.7	np	6.2	np	739.0
September Quarter	240.7	153.7	234.9	47.2	53.2	np	6.9	np	768.3

np not available for publication but included in totals where applicable, unless otherwise indicated

<i>Period</i>	<i>New South Wales</i>	<i>Victoria</i>	<i>Queensland</i>	<i>South Australia</i>	<i>Western Australia</i>	<i>Tasmania</i>	<i>Northern Territory</i>	<i>Australian Capital Territory</i>	<i>Australia</i>
ROOM OCCUPANCY RATE (%)									
<b>2006</b>									
September Quarter	42.3	37.5	59.9	37.9	45.5	np	48.2	np	44.4
December Quarter	43.7	43.6	55.6	40.6	50.8	45.1	np	np	46.7
<b>2007</b>									
March Quarter	45.2	46.4	51.2	42.7	52.4	60.5	np	np	47.9
June Quarter	41.3	39.8	54.2	38.8	50.1	np	52.7	np	44.3
September Quarter	43.4	38.0	60.4	37.3	47.9	np	57.8	np	45.4
GUEST NIGHTS OCCUPIED ('000)									
<b>2006</b>									
September Quarter	435.5	279.6	428.8	82.4	102.2	np	12.8	np	1 392.1
December Quarter	461.6	317.7	402.3	92.3	122.6	81.8	np	np	1 490.5
<b>2007</b>									
March Quarter	458.6	340.2	359.3	90.1	123.2	112.2	np	np	1 492.1
June Quarter	410.6	282.6	374.7	80.0	112.7	np	10.5	np	1 337.5
September Quarter	445.2	277.1	429.2	77.5	105.1	np	13.7	np	1 403.4
BED OCCUPANCY RATE (%)									
<b>2006</b>									
September Quarter	26.6	24.0	35.3	23.0	31.0	np	30.2	np	27.8
December Quarter	28.3	28.1	33.1	26.2	36.4	31.8	np	np	30.0
<b>2007</b>									
March Quarter	29.9	30.7	30.4	27.6	35.1	43.7	np	np	31.1
June Quarter	25.9	25.1	31.2	24.6	31.3	np	30.4	np	27.3
September Quarter	27.7	23.9	35.2	23.2	29.6	np	39.3	np	28.2
GUEST ARRIVALS ('000)									
<b>2006</b>									
September Quarter	260.9	170.4	210.6	46.8	47.8	np	8.8	np	776.9
December Quarter	267.6	189.9	200.2	54.3	57.1	48.2	np	np	824.4
<b>2007</b>									
March Quarter	257.6	198.7	175.8	54.7	54.0	65.0	np	np	811.0
June Quarter	241.7	174.5	189.5	48.1	53.2	np	6.7	np	750.8
September Quarter	265.4	172.6	211.6	45.9	51.8	np	9.3	np	786.7
AVERAGE LENGTH OF STAY (days)									
<b>2006</b>									
September Quarter	1.7	1.6	2.0	1.8	2.1	np	1.5	np	1.8
December Quarter	1.7	1.7	2.0	1.7	2.1	1.7	np	np	1.8
<b>2007</b>									
March Quarter	1.8	1.7	2.0	1.6	2.3	1.7	np	np	1.8
June Quarter	1.7	1.6	2.0	1.7	2.1	np	1.6	np	1.8
September Quarter	1.7	1.6	2.0	1.7	2.0	np	1.5	np	1.8

np not available for publication but included in totals where applicable, unless otherwise indicated



<i>Period</i>	<i>New South Wales</i>	<i>Victoria</i>	<i>Queensland</i>	<i>South Australia</i>	<i>Western Australia</i>	<i>Tasmania</i>	<i>Northern Territory</i>	<i>Australian Capital Territory</i>	<i>Australia</i>
TAKINGS FROM ACCOMMODATION (\$'000)									
<b>2006</b>									
September Quarter	22 679	14 260	19 100	4 183	5 487	np	602	np	69 022
December Quarter	22 854	16 322	18 283	4 631	6 670	4 658	np	np	73 934
<b>2007</b>									
March Quarter	23 077	17 589	16 375	4 611	6 745	6 653	np	np	75 437
June Quarter	20 848	14 440	17 349	3 985	6 593	np	559	np	67 716
September Quarter	24 022	14 688	20 574	3 852	6 334	np	634	np	73 442
AVERAGE TAKINGS PER ROOM NIGHT OCCUPIED (\$)									
<b>2006</b>									
September Quarter	95.43	92.74	81.99	84.21	111.56	np	89.27	np	91.02
December Quarter	93.78	93.58	84.87	87.28	118.13	110.94	np	np	93.32
<b>2007</b>									
March Quarter	96.16	96.95	85.07	86.90	117.64	119.32	np	np	96.09
June Quarter	92.48	91.06	83.43	82.43	118.35	np	89.63	np	91.63
September Quarter	99.79	95.56	87.57	81.59	119.17	np	91.66	np	95.58
AVERAGE TAKINGS PER ROOM NIGHT AVAILABLE (\$)									
<b>2006</b>									
September Quarter	40.33	34.79	49.08	31.92	50.76	np	43.07	np	40.43
December Quarter	40.95	40.79	47.22	35.46	60.03	49.98	np	np	43.63
<b>2007</b>									
March Quarter	43.50	44.95	43.52	37.07	61.69	72.13	np	np	46.07
June Quarter	38.20	36.28	45.20	32.00	59.34	np	47.24	np	40.55
September Quarter	43.31	36.27	52.89	30.46	57.09	np	53.01	np	43.37

np not available for publication but included in totals where applicable, unless otherwise indicated

<i>Period</i>	<i>New South Wales</i>	<i>Victoria</i>	<i>Queensland</i>	<i>South Australia</i>	<i>Western Australia</i>	<i>Tasmania</i>	<i>Northern Territory</i>	<i>Australian Capital Territory</i>	<i>Australia</i>
ESTABLISHMENTS (no.)									
<b>2006</b>									
September Quarter	1 415	791	1 073	251	348	156	94	58	4 186
December Quarter	1 414	796	1 081	250	349	157	91	57	4 195
<b>2007</b>									
March Quarter	1 421	795	1 084	253	345	157	93	57	4 205
June Quarter	1 416	793	1 093	253	347	155	92	57	4 206
September Quarter	1 421	795	1 100	253	349	154	92	56	4 220
ROOMS (no.)									
<b>2006</b>									
September Quarter	68 210	37 532	56 970	11 645	21 172	6 486	6 707	5 046	213 768
December Quarter	68 601	37 716	57 793	11 642	21 262	6 549	6 597	5 012	215 172
<b>2007</b>									
March Quarter	69 071	37 694	58 004	11 735	21 017	6 581	6 650	5 011	215 763
June Quarter	68 929	37 601	58 666	11 547	21 088	6 539	6 614	5 023	216 007
September Quarter	68 986	37 742	59 257	11 564	21 172	6 466	6 710	4 948	216 845
BED SPACES (no.)									
<b>2006</b>									
September Quarter	191 372	102 716	177 553	31 961	57 815	18 789	19 572	14 639	614 417
December Quarter	192 932	102 842	179 214	31 921	58 053	18 945	20 239	14 974	619 120
<b>2007</b>									
March Quarter	193 589	102 946	178 731	32 269	57 413	18 986	20 352	14 901	619 187
June Quarter	192 997	102 418	180 900	31 430	57 196	18 796	20 111	14 885	618 733
September Quarter	192 495	103 552	182 166	31 606	57 510	18 549	20 269	14 622	620 769
PERSONS EMPLOYED (no.)									
<b>2006</b>									
September Quarter	34 132	21 751	32 544	7 450	10 470	4 454	3 479	2 559	116 839
December Quarter	33 617	21 852	32 906	7 226	10 825	4 554	2 929	2 408	116 317
<b>2007</b>									
March Quarter	33 587	21 987	32 221	7 346	10 608	4 604	2 921	2 429	115 703
June Quarter	33 257	21 951	32 179	7 286	10 734	4 490	3 012	2 431	115 340
September Quarter	33 549	21 783	32 296	7 193	10 714	4 489	3 107	2 308	115 439
ROOM NIGHTS OCCUPIED ('000)									
<b>2006</b>									
September Quarter	3 872.3	2 091.1	3 845.9	661.5	1 279.4	262.7	468.6	348.4	12 829.8
December Quarter	4 086.1	2 268.0	3 682.3	688.1	1 356.3	368.5	367.8	344.0	13 161.0
<b>2007</b>									
March Quarter	4 055.9	2 307.2	3 383.7	699.7	1 312.7	426.2	311.9	336.4	12 833.8
June Quarter	3 726.6	2 095.3	3 361.0	656.5	1 265.8	311.8	397.2	314.0	12 128.2
September Quarter	4 055.3	2 207.0	3 949.0	669.0	1 378.2	290.3	482.2	349.8	13 380.7
<b>Year ended September 2006</b>	15 242.6	8 466.2	13 916.1	2 632.0	4 976.5	1 355.1	1 460.9	1 298.1	49 347.5
<b>Year ended September 2007</b>	15 923.9	8 877.5	14 376.0	2 713.3	5 312.9	1 396.8	1 559.0	1 344.3	51 503.8

<i>Period</i>	<i>New South Wales</i>	<i>Victoria</i>	<i>Queensland</i>	<i>South Australia</i>	<i>Western Australia</i>	<i>Tasmania</i>	<i>Northern Territory</i>	<i>Australian Capital Territory</i>	<i>Australia</i>
<b>ROOM OCCUPANCY RATE (%)</b>									
<b>2006</b>									
September Quarter	61.7	60.9	73.4	61.8	65.7	44.1	75.9	75.0	65.3
December Quarter	65.5	66.2	69.3	64.4	69.5	61.2	60.7	74.7	66.9
<b>2007</b>									
March Quarter	66.1	69.0	65.0	66.3	69.9	71.9	52.3	74.6	66.6
June Quarter	59.9	61.6	63.0	62.5	66.1	52.4	66.0	69.3	61.9
September Quarter	64.0	63.7	72.5	62.9	70.8	48.8	78.1	76.8	67.1
<b>Year ended September 2006</b>	61.8	63.0	67.1	61.8	64.2	57.6	61.2	71.4	63.7
<b>Year ended September 2007</b>	63.9	65.1	67.5	64.0	69.1	58.6	64.4	73.9	65.7
<b>GUEST NIGHTS OCCUPIED ('000)</b>									
<b>2006</b>									
September Quarter	6 619.9	3 500.1	7 455.9	1 056.3	2 061.1	448.5	849.2	594.1	22 585.1
December Quarter	7 059.9	3 832.5	7 305.9	1 128.0	2 311.7	646.6	645.1	555.6	23 485.3
<b>2007</b>									
March Quarter	7 112.6	3 931.7	6 610.3	1 168.3	2 211.6	804.3	510.5	549.2	22 898.5
June Quarter	6 293.3	3 441.9	6 354.9	1 039.4	2 050.8	554.2	682.4	493.6	20 910.5
September Quarter	6 905.2	3 705.0	7 547.7	1 058.0	2 231.7	498.8	839.0	587.3	23 372.8
<b>Year ended September 2006</b>	26 285.0	14 217.2	27 237.5	4 269.5	8 287.6	2 464.6	2 581.3	2 108.2	87 450.9
<b>Year ended September 2007</b>	27 371.0	14 911.2	27 818.8	4 393.8	8 805.8	2 503.9	2 677.0	2 185.7	90 667.1
<b>BED OCCUPANCY RATE (%)</b>									
<b>2006</b>									
September Quarter	37.6	37.2	45.7	35.9	38.8	26.0	47.2	44.1	40.0
December Quarter	40.2	41.3	44.4	38.5	43.4	37.1	34.7	40.3	41.5
<b>2007</b>									
March Quarter	41.4	43.3	41.2	40.2	43.1	47.1	28.0	40.9	41.5
June Quarter	36.2	37.2	38.6	36.3	39.5	32.4	37.3	36.8	37.3
September Quarter	39.0	39.0	45.1	36.4	42.2	29.3	45.0	43.7	41.0
<b>Year ended September 2006</b>	38.4	39.0	42.3	36.5	39.3	36.2	37.0	41.5	39.6
<b>Year ended September 2007</b>	39.2	40.1	42.3	37.9	42.0	36.5	36.3	40.4	40.3
<b>GUEST ARRIVALS ('000)</b>									
<b>2006</b>									
September Quarter	3 289.4	1 657.1	2 772.3	556.0	906.8	236.4	406.8	254.8	10 079.5
December Quarter	3 465.5	1 790.3	2 723.4	574.0	901.7	340.4	318.0	232.7	10 346.0
<b>2007</b>									
March Quarter	3 316.1	1 748.9	2 471.5	540.1	858.6	425.1	251.7	230.1	9 842.1
June Quarter	3 129.4	1 637.1	2 510.1	521.5	840.9	285.3	336.4	222.2	9 482.9
September Quarter	3 390.3	1 744.6	2 868.9	549.2	925.2	264.2	456.2	284.9	10 483.5
<b>Year ended September 2006</b>	12 754.7	6 628.3	10 094.5	2 110.6	3 492.5	1 264.2	1 250.0	881.2	38 476.0
<b>Year ended September 2007</b>	13 301.4	6 920.9	10 573.9	2 184.8	3 526.4	1 315.0	1 362.3	969.9	40 154.5

<i>Period</i>	<i>New South Wales</i>	<i>Victoria</i>	<i>Queensland</i>	<i>South Australia</i>	<i>Western Australia</i>	<i>Tasmania</i>	<i>Northern Territory</i>	<i>Australian Capital Territory</i>	<i>Australia</i>
AVERAGE LENGTH OF STAY ( <i>days</i> )									
<b>2006</b>									
September Quarter	2.0	2.1	2.7	1.9	2.3	1.9	2.1	2.3	2.2
December Quarter	2.0	2.1	2.7	2.0	2.6	1.9	2.0	2.4	2.3
<b>2007</b>									
March Quarter	2.1	2.2	2.7	2.2	2.6	1.9	2.0	2.4	2.3
June Quarter	2.0	2.1	2.5	2.0	2.4	1.9	2.0	2.2	2.2
September Quarter	2.0	2.1	2.6	1.9	2.4	1.9	1.8	2.1	2.2
<b>Year ended September 2006</b>	2.1	2.1	2.7	2.0	2.4	1.9	2.1	2.4	2.3
<b>Year ended September 2007</b>	2.1	2.2	2.6	2.0	2.5	1.9	2.0	2.3	2.3
TAKINGS FROM ACCOMMODATION (\$'000)									
<b>2006</b>									
September Quarter	551 930	300 201	505 820	74 864	163 219	30 262	68 576	45 619	1 740 492
December Quarter	619 483	330 008	515 418	80 482	181 034	47 726	47 008	45 455	1 866 614
<b>2007</b>									
March Quarter	619 025	349 868	458 620	86 408	177 003	55 236	38 181	47 979	1 832 321
June Quarter	533 278	301 112	445 375	77 938	172 641	37 606	53 437	45 748	1 667 135
September Quarter	615 632	336 516	560 050	80 111	191 220	34 890	73 642	50 520	1 942 581
<b>Year ended September 2006</b>	2 143 706	1 198 516	1 796 632	301 036	610 800	163 328	188 156	164 913	6 567 088
<b>Year ended September 2007</b>	2 387 418	1 317 505	1 979 463	324 938	721 898	175 459	212 268	189 702	7 308 651
AVERAGE TAKINGS PER ROOM NIGHT OCCUPIED (\$)									
<b>2006</b>									
September Quarter	142.53	143.56	131.52	113.18	127.58	115.18	146.35	130.95	135.66
December Quarter	151.61	145.51	139.97	116.96	133.48	129.52	127.83	132.13	141.83
<b>2007</b>									
March Quarter	152.62	151.64	135.54	123.49	134.84	129.61	122.40	142.61	142.77
June Quarter	143.10	143.71	132.51	118.72	136.39	120.60	134.54	145.68	137.46
September Quarter	151.81	152.48	141.82	119.75	138.75	120.17	152.74	144.43	145.18
<b>Year ended September 2006</b>	140.64	141.56	129.10	114.38	122.74	120.53	128.80	127.04	133.08
<b>Year ended September 2007</b>	149.93	148.41	137.69	119.76	135.88	125.61	136.15	141.12	141.91
AVERAGE TAKINGS PER ROOM NIGHT AVAILABLE (\$)									
<b>2006</b>									
September Quarter	87.97	87.43	96.54	69.91	83.86	50.83	111.14	98.27	88.62
December Quarter	99.27	96.30	97.03	75.33	92.74	79.28	77.57	98.63	94.90
<b>2007</b>									
March Quarter	100.84	104.58	88.07	81.81	94.21	93.26	64.02	106.39	95.10
June Quarter	85.72	88.49	83.43	74.17	90.15	63.20	88.78	101.02	85.15
September Quarter	97.12	97.09	102.78	75.33	98.17	58.69	119.29	110.98	97.46
<b>Year ended September 2006</b>	86.94	89.18	86.57	70.65	78.83	69.45	78.81	90.76	84.83
<b>Year ended September 2007</b>	95.73	96.58	92.90	76.66	93.83	73.60	87.65	104.24	93.17

<i>Period</i>	<i>New South Wales</i>	<i>Victoria</i>	<i>Queensland</i>	<i>South Australia</i>	<i>Western Australia</i>	<i>Tasmania</i>	<i>Northern Territory</i>	<i>Australian Capital Territory</i>	<i>Australia</i>
ESTABLISHMENTS (no.)									
<b>2006</b>									
September Quarter	2 038	1 257	1 499	401	488	281	108	60	6 132
December Quarter	2 037	1 253	1 504	400	492	282	105	59	6 132
<b>2007</b>									
March Quarter	2 029	1 253	1 505	399	490	283	106	59	6 124
June Quarter	2 029	1 251	1 518	396	489	278	104	59	6 124
September Quarter	2 033	1 256	1 524	396	491	279	104	58	6 141
ROOMS (no.)									
<b>2006</b>									
September Quarter	74 337	41 996	61 200	13 071	22 350	np	6 859	np	232 377
December Quarter	74 749	42 121	62 029	13 079	22 473	7 574	np	np	233 803
<b>2007</b>									
March Quarter	75 076	42 094	62 205	13 134	22 258	7 615	np	np	234 204
June Quarter	74 995	42 012	62 888	12 921	22 309	np	6 744	np	234 471
September Quarter	75 036	42 159	63 485	12 942	22 390	np	6 840	np	235 320
BED SPACES (no.)									
<b>2006</b>									
September Quarter	209 227	115 426	190 744	35 856	61 415	np	20 031	np	669 031
December Quarter	210 919	115 306	192 516	35 838	61 719	21 777	np	np	673 792
<b>2007</b>									
March Quarter	211 020	115 440	191 915	35 935	61 403	21 873	np	np	673 308
June Quarter	210 628	114 936	194 115	35 012	61 159	np	20 491	np	672 904
September Quarter	210 037	116 223	195 406	35 249	61 415	np	20 647	np	675 062
PERSONS EMPLOYED (no.)									
<b>2006</b>									
September Quarter	37 262	24 341	34 892	9 124	11 382	np	3 543	np	128 316
December Quarter	36 933	24 399	35 216	9 095	11 816	5 352	np	np	128 211
<b>2007</b>									
March Quarter	36 645	24 536	34 461	9 172	11 638	5 388	np	np	127 245
June Quarter	36 405	24 507	34 467	9 032	11 739	np	3 068	np	126 944
September Quarter	36 684	24 338	34 646	9 035	11 696	np	3 159	np	127 195
ROOM NIGHTS OCCUPIED ('000)									
<b>2006</b>									
September Quarter	4 109.9	2 244.9	4 078.8	711.1	1 328.5	np	475.3	np	13 588.1
December Quarter	4 329.8	2 442.4	3 897.7	741.2	1 412.7	410.5	np	np	13 953.3
<b>2007</b>									
March Quarter	4 295.9	2 488.6	3 576.2	752.8	1 370.0	481.9	np	np	13 618.9
June Quarter	3 952.1	2 253.9	3 568.9	704.8	1 321.5	np	403.4	np	12 867.2
September Quarter	4 296.0	2 360.7	4 183.9	716.2	1 431.3	np	489.1	np	14 149.1

np not available for publication but included in totals where applicable, unless otherwise indicated

<i>Period</i>	<i>New South Wales</i>	<i>Victoria</i>	<i>Queensland</i>	<i>South Australia</i>	<i>Western Australia</i>	<i>Tasmania</i>	<i>Northern Territory</i>	<i>Australian Capital Territory</i>	<i>Australia</i>
ROOM OCCUPANCY RATE (%)									
<b>2006</b>									
September Quarter	60.1	58.4	72.5	59.2	64.7	np	75.3	np	63.7
December Quarter	63.7	63.8	68.4	61.8	68.5	59.0	np	np	65.3
<b>2007</b>									
March Quarter	64.4	66.6	64.0	63.8	68.9	70.4	np	np	65.1
June Quarter	58.4	59.3	62.4	60.0	65.2	np	65.7	np	60.6
September Quarter	62.3	61.0	71.7	60.2	69.5	np	77.7	np	65.4
GUEST NIGHTS OCCUPIED ('000)									
<b>2006</b>									
September Quarter	7 055.4	3 779.7	7 884.7	1 138.7	2 163.3	np	861.9	np	23 977.1
December Quarter	7 521.5	4 150.2	7 708.2	1 220.4	2 434.2	728.4	np	np	24 975.7
<b>2007</b>									
March Quarter	7 571.2	4 271.9	6 969.7	1 258.5	2 334.9	916.5	np	np	24 390.7
June Quarter	6 703.9	3 724.6	6 729.6	1 119.5	2 163.5	np	692.9	np	22 248.0
September Quarter	7 350.4	3 982.2	7 976.9	1 135.5	2 336.8	np	852.7	np	24 776.2
BED OCCUPANCY RATE (%)									
<b>2006</b>									
September Quarter	36.7	35.8	44.9	34.5	38.3	np	46.8	np	39.0
December Quarter	39.2	39.8	43.6	37.2	43.0	36.4	np	np	40.6
<b>2007</b>									
March Quarter	40.5	41.9	40.4	39.0	42.6	46.6	np	np	40.6
June Quarter	35.3	35.9	38.1	35.1	38.9	np	37.2	np	36.5
September Quarter	38.1	37.3	44.4	35.0	41.4	np	44.9	np	39.9
GUEST ARRIVALS ('000)									
<b>2006</b>									
September Quarter	3 550.3	1 827.5	2 982.9	602.8	954.6	np	415.5	np	10 856.4
December Quarter	3 733.1	1 980.2	2 923.5	628.2	958.8	388.6	np	np	11 170.4
<b>2007</b>									
March Quarter	3 573.8	1 947.6	2 647.3	594.8	912.6	490.1	np	np	10 653.2
June Quarter	3 371.1	1 811.6	2 699.6	569.7	894.1	np	343.1	np	10 233.7
September Quarter	3 655.7	1 917.3	3 080.4	595.1	977.0	np	465.5	np	11 270.2
AVERAGE LENGTH OF STAY (days)									
<b>2006</b>									
September Quarter	2.0	2.1	2.6	1.9	2.3	np	2.1	np	2.2
December Quarter	2.0	2.1	2.6	1.9	2.5	1.9	np	np	2.2
<b>2007</b>									
March Quarter	2.1	2.2	2.6	2.1	2.6	1.9	np	np	2.3
June Quarter	2.0	2.1	2.5	2.0	2.4	np	2.0	np	2.2
September Quarter	2.0	2.1	2.6	1.9	2.4	np	1.8	np	2.2

np not available for publication but included in totals where applicable, unless otherwise indicated

<i>Period</i>	<i>New South Wales</i>	<i>Victoria</i>	<i>Queensland</i>	<i>South Australia</i>	<i>Western Australia</i>	<i>Tasmania</i>	<i>Northern Territory</i>	<i>Australian Capital Territory</i>	<i>Australia</i>
TAKINGS FROM ACCOMMODATION (\$'000)									
<b>2006</b>									
September Quarter	574 609	314 461	524 920	79 047	168 706	np	69 178	np	1 809 514
December Quarter	642 337	346 331	533 701	85 113	187 704	52 384	np	np	1 940 549
<b>2007</b>									
March Quarter	642 102	367 457	474 995	91 018	183 749	61 890	np	np	1 907 758
June Quarter	554 126	315 552	462 724	81 922	179 234	np	53 996	np	1 734 851
September Quarter	639 654	351 204	580 624	83 963	197 555	np	74 276	np	2 016 023
AVERAGE TAKINGS PER ROOM NIGHT OCCUPIED (\$)									
<b>2006</b>									
September Quarter	139.81	140.08	128.69	111.15	126.99	np	145.54	np	133.17
December Quarter	148.35	141.80	136.93	114.83	132.86	127.62	np	np	139.07
<b>2007</b>									
March Quarter	149.47	147.65	132.82	120.91	134.12	128.42	np	np	140.08
June Quarter	140.21	140.00	129.65	116.23	135.63	np	133.84	np	134.83
September Quarter	148.89	148.77	138.77	117.23	138.02	np	151.87	np	142.48
AVERAGE TAKINGS PER ROOM NIGHT AVAILABLE (\$)									
<b>2006</b>									
September Quarter	84.05	81.82	93.26	65.77	82.12	np	109.63	np	84.76
December Quarter	94.48	90.50	93.64	70.99	90.98	75.35	np	np	90.83
<b>2007</b>									
March Quarter	96.28	98.34	85.06	77.10	92.42	90.41	np	np	91.26
June Quarter	81.89	83.02	80.86	69.70	88.46	np	87.98	np	81.65
September Quarter	92.79	90.72	99.45	70.56	95.96	np	118.03	np	93.22

np not available for publication but included in totals where applicable, unless otherwise indicated

Period	New South Wales	Victoria	Queensland	South Australia	Western Australia	Tasmania	Northern Territory	Australian Capital Territory	Australia
<b>ESTABLISHMENTS (no.)</b>									
<b>2006</b>									
September Quarter	445	358	260	136	172	45	48	3	1 467
December Quarter	444	356	259	135	172	45	48	3	1 462
<b>2007</b>									
March Quarter	444	357	256	135	168	46	48	3	1 457
June Quarter	443	356	256	135	171	46	49	3	1 459
September Quarter	443	357	255	135	170	47	49	3	1 459
<b>ON-SITE VANS (no.)</b>									
<b>2006</b>									
September Quarter	6 726	2 703	1 701	330	1 285	np	np	np	13 132
December Quarter	7 025	2 603	1 652	436	1 248	np	np	np	13 320
<b>2007</b>									
March Quarter	7 047	2 563	1 557	412	1 187	np	np	58	13 123
June Quarter	7 541	2 632	1 565	483	1 271	np	np	np	13 843
September Quarter	6 832	2 796	1 606	401	1 243	np	np	np	13 250
<b>OTHER POWERED SITES (no.)</b>									
<b>2006</b>									
September Quarter	40 211	33 302	19 332	11 838	15 118	np	np	np	127 320
December Quarter	40 291	33 086	19 188	11 653	14 880	np	np	np	126 644
<b>2007</b>									
March Quarter	40 060	33 266	19 155	11 645	14 709	np	np	373	126 445
June Quarter	39 441	32 990	19 092	11 460	14 681	np	np	np	125 372
September Quarter	39 641	32 818	18 762	11 523	14 818	np	np	np	125 290
<b>UNPOWERED SITES (no.)</b>									
<b>2006</b>									
September Quarter	11 294	9 694	5 861	4 484	3 511	np	np	np	39 506
December Quarter	11 063	9 743	5 712	4 491	3 463	np	np	np	39 295
<b>2007</b>									
March Quarter	10 971	9 595	5 720	4 373	3 321	np	np	400	38 895
June Quarter	11 063	9 290	5 637	4 358	3 210	np	np	np	38 475
September Quarter	10 935	9 741	5 546	4 314	3 234	np	np	np	38 749
<b>CABINS FLATS, UNITS AND VILLAS (no.)</b>									
<b>2006</b>									
September Quarter	9 574	4 935	4 238	2 299	2 589	np	np	np	25 381
December Quarter	9 597	4 974	4 299	2 321	2 646	np	np	np	25 613
<b>2007</b>									
March Quarter	10 027	4 957	4 283	2 383	2 621	np	np	105	26 038
June Quarter	9 870	5 178	4 274	2 370	2 628	np	np	np	26 108
September Quarter	10 057	5 125	4 487	2 392	2 561	np	np	np	26 428
<b>TOTAL CAPACITY (no.)</b>									
<b>2006</b>									
September Quarter	67 805	50 634	31 132	18 951	22 503	np	np	np	205 339
December Quarter	67 976	50 406	30 851	18 901	22 237	np	np	np	204 872
<b>2007</b>									
March Quarter	68 105	50 381	30 715	18 813	21 838	np	np	936	204 501
June Quarter	67 915	50 090	30 568	18 671	21 790	np	np	np	203 798
September Quarter	67 465	50 480	30 401	18 630	21 856	np	np	np	203 717

np not available for publication but included in totals where applicable, unless otherwise indicated

(a) Comprising establishments with 40 or more powered sites and cabins, flats, units and villas.



<i>Period</i>	<i>New South Wales</i>	<i>Victoria</i>	<i>Queensland</i>	<i>South Australia</i>	<i>Western Australia</i>	<i>Tasmania</i>	<i>Northern Territory</i>	<i>Australian Capital Territory</i>	<i>Australia</i>
<b>PERSONS EMPLOYED (no.)</b>									
<b>2006</b>									
September Quarter	2 767	1 511	1 429	775	1 138	np	np	np	8 509
December Quarter	2 886	1 698	1 401	830	1 120	np	np	np	8 830
<b>2007</b>									
March Quarter	2 869	1 667	1 377	831	1 127	np	np	82	8 793
June Quarter	2 751	1 589	1 436	804	1 163	np	np	np	8 639
September Quarter	2 791	1 578	1 468	821	1 153	np	np	np	8 720
<b>SITES OCCUPIED BY LONG-TERM GUESTS (no.)</b>									
<b>2006</b>									
September Quarter	6 184	2 736	4 972	1 062	3 023	np	np	np	18 957
December Quarter	6 155	2 757	4 564	1 029	2 816	np	np	np	18 187
<b>2007</b>									
March Quarter	6 165	2 803	4 614	1 020	2 833	np	np	150	18 346
June Quarter	6 038	2 792	4 706	1 036	2 945	np	np	np	18 497
September Quarter	6 021	2 826	4 980	1 045	3 032	np	np	np	18 924
<b>OTHER SITES PERMANENTLY RESERVED (no.)</b>									
<b>2006</b>									
September Quarter	19 666	15 197	1 004	2 202	1 899	np	np	np	40 912
December Quarter	19 519	14 897	1 049	2 159	1 848	np	np	np	40 410
<b>2007</b>									
March Quarter	19 341	14 918	957	2 143	1 883	np	np	5	40 149
June Quarter	18 906	14 967	903	2 063	1 782	np	np	np	39 592
September Quarter	19 436	14 815	921	2 148	1 830	np	np	np	40 069
<b>SITE NIGHTS OCCUPIED ('000)</b>									
<b>2006</b>									
September Quarter	3 270.5	1 959.6	1 705.9	564.8	1 078.1	np	np	np	9 124.9
December Quarter	3 474.2	2 169.0	1 219.4	655.4	876.8	np	np	np	8 757.4
<b>2007</b>									
March Quarter	3 664.1	2 439.5	1 100.0	730.4	858.9	np	np	32.3	9 158.4
June Quarter	3 296.5	2 107.0	1 424.8	645.9	958.0	np	np	np	8 923.0
September Quarter	3 325.0	1 989.5	1 756.4	587.5	1 103.2	np	np	np	9 332.2
<b>SITE OCCUPANCY RATE (%)</b>									
<b>2006</b>									
September Quarter	52.5	44.4	59.7	32.5	52.1	np	np	np	49.0
December Quarter	55.6	47.2	43.0	37.7	43.1	np	np	np	46.6
<b>2007</b>									
March Quarter	59.8	53.9	39.9	43.3	44.2	np	np	38.4	50.0
June Quarter	53.3	47.1	51.2	38.3	48.4	np	np	np	48.4
September Quarter	53.6	44.7	62.8	34.3	55.0	np	np	np	50.4

np not available for publication but included in totals where applicable, unless otherwise indicated

(a) Comprising establishments with 40 or more powered sites and cabins, flats, units and villas.

<i>Period</i>	<i>New South Wales</i>	<i>Victoria</i>	<i>Queensland</i>	<i>South Australia</i>	<i>Western Australia</i>	<i>Tasmania</i>	<i>Northern Territory</i>	<i>Australian Capital Territory</i>	<i>Australia</i>
TAKINGS FROM ACCOMMODATION (\$'000)									
<b>2006</b>									
September Quarter	55 972	27 461	44 969	12 152	25 903	np	np	np	182 011
December Quarter	73 366	34 320	34 646	15 726	23 358	np	np	np	191 194
<b>2007</b>									
March Quarter	81 640	40 934	29 659	18 265	22 931	np	np	1 198	204 863
June Quarter	62 817	28 656	39 529	14 551	24 457	np	np	np	184 584
September Quarter	59 825	29 528	50 491	12 770	29 462	np	np	np	198 294

np not available for publication but included in totals where applicable, unless otherwise indicated

(a) Comprising establishments with 40 or more powered sites and cabins, flats, units and villas.

Period	New South Wales	Victoria	Queensland	South Australia	Western Australia	Tasmania	Northern Territory	Australian Capital Territory	Australia
ESTABLISHMENTS (no.)									
<b>2006</b>									
September Quarter	78	43	74	8	26	1	3	—	233
December Quarter	78	44	74	8	26	1	3	—	234
<b>2007</b>									
March Quarter	76	44	75	8	26	1	2	—	232
June Quarter	74	44	75	8	26	1	2	—	230
September Quarter	76	44	73	8	26	1	2	—	230
ON-SITE VANS (no.)									
<b>2006</b>									
September Quarter	1 266	429	1 992	159	377	np	np	—	4 240
December Quarter	1 233	384	1 991	161	377	np	np	—	4 163
<b>2007</b>									
March Quarter	1 188	376	1 923	162	374	np	np	—	4 032
June Quarter	1 183	376	1 890	259	377	np	np	—	4 094
September Quarter	1 195	482	1 851	109	373	np	np	—	4 019
OTHER POWERED SITES (no.)									
<b>2006</b>									
September Quarter	6 006	3 690	4 737	692	2 072	np	np	—	17 524
December Quarter	5 963	3 783	4 829	685	2 043	np	np	—	17 630
<b>2007</b>									
March Quarter	5 893	3 768	5 103	688	2 047	np	np	—	17 754
June Quarter	5 816	3 772	5 062	582	2 047	np	np	—	17 529
September Quarter	5 576	3 571	5 038	748	2 057	np	np	—	17 240
UNPOWERED SITES (no.)									
<b>2006</b>									
September Quarter	842	363	507	121	181	np	np	—	2 085
December Quarter	865	356	490	127	178	np	np	—	2 097
<b>2007</b>									
March Quarter	813	355	492	127	179	np	np	—	2 037
June Quarter	807	350	510	104	179	np	np	—	2 028
September Quarter	814	352	454	114	147	np	np	—	1 959
CABINS FLATS, UNITS AND VILLAS (no.)									
<b>2006</b>									
September Quarter	2 208	1 293	1 814	251	674	np	np	—	6 288
December Quarter	2 239	1 329	1 845	256	690	np	np	—	6 407
<b>2007</b>									
March Quarter	2 153	1 343	1 785	253	688	np	np	—	6 264
June Quarter	2 306	1 354	1 790	272	668	np	np	—	6 432
September Quarter	2 407	1 454	1 812	260	686	np	np	—	6 661

— nil or rounded to zero (including null cells)

np not available for publication but included in totals where applicable, unless otherwise indicated

(a) Comprising establishments with 40 or more powered sites and cabins, flats, units and villas.

<i>Period</i>	<i>New South Wales</i>	<i>Victoria</i>	<i>Queensland</i>	<i>South Australia</i>	<i>Western Australia</i>	<i>Tasmania</i>	<i>Northern Territory</i>	<i>Australian Capital Territory</i>	<i>Australia</i>
TOTAL CAPACITY (no.)									
<b>2006</b>									
September Quarter	10 322	5 775	9 050	1 223	3 304	np	np	—	30 137
December Quarter	10 300	5 852	9 155	1 229	3 288	np	np	—	30 297
<b>2007</b>									
March Quarter	10 047	5 842	9 303	1 230	3 288	np	np	—	30 087
June Quarter	10 112	5 852	9 252	1 217	3 271	np	np	—	30 083
September Quarter	9 992	5 859	9 155	1 231	3 263	np	np	—	29 879
PERSONS EMPLOYED (no.)									
<b>2006</b>									
September Quarter	432	220	442	53	153	np	np	—	1 315
December Quarter	441	229	437	57	156	np	np	—	1 334
<b>2007</b>									
March Quarter	412	225	446	52	150	np	np	—	1 297
June Quarter	390	231	446	53	153	np	np	—	1 286
September Quarter	425	235	436	54	155	np	np	—	1 319
SITES OCCUPIED BY LONG-TERM GUESTS (no.)									
<b>2006</b>									
September Quarter	5 163	3 147	6 070	665	1 914	np	np	—	17 079
December Quarter	5 205	3 101	6 141	657	1 907	np	np	—	17 133
<b>2007</b>									
March Quarter	5 087	3 106	6 063	668	1 909	np	np	—	16 896
June Quarter	5 036	2 990	6 226	585	2 048	np	np	—	16 935
September Quarter	5 039	2 965	6 179	649	2 020	np	np	—	16 911
OTHER SITES PERMANENTLY RESERVED (no.)									
<b>2006</b>									
September Quarter	918	327	374	38	10	np	np	—	1 734
December Quarter	961	371	377	38	22	np	np	—	1 836
<b>2007</b>									
March Quarter	965	318	370	1	18	np	np	—	1 770
June Quarter	960	314	459	25	18	np	np	—	1 874
September Quarter	958	318	413	24	10	np	np	—	1 787
SITE NIGHTS OCCUPIED ('000)									
<b>2006</b>									
September Quarter	676.8	367.7	697.4	78.4	241.5	np	np	—	2 090.4
December Quarter	693.0	375.8	683.6	75.5	243.4	np	np	—	2 096.1
<b>2007</b>									
March Quarter	673.5	395.2	676.7	74.9	243.7	np	np	—	2 089.8
June Quarter	647.0	365.3	705.2	73.2	237.2	np	np	—	2 049.2
September Quarter	675.1	361.3	714.4	86.3	243.4	np	np	—	2 100.6

— nil or rounded to zero (including null cells)

np not available for publication but included in totals where applicable, unless otherwise indicated

(a) Comprising establishments with 40 or more powered sites and cabins, flats, units and villas.

<i>Period</i>	<i>New South Wales</i>	<i>Victoria</i>	<i>Queensland</i>	<i>South Australia</i>	<i>Western Australia</i>	<i>Tasmania</i>	<i>Northern Territory</i>	<i>Australian Capital Territory</i>	<i>Australia</i>
---------------	------------------------	-----------------	-------------------	------------------------	--------------------------	-----------------	---------------------------	-------------------------------------	------------------

## SITE OCCUPANCY RATE (%)

<b>2006</b>									
September Quarter	71.3	69.2	83.8	69.6	79.5	np	np	—	75.4
December Quarter	73.1	69.8	81.2	66.8	80.5	np	np	—	75.2
<b>2007</b>									
March Quarter	74.5	75.2	80.8	67.6	82.4	np	np	—	77.2
June Quarter	70.3	68.6	83.8	66.1	79.7	np	np	—	74.9
September Quarter	73.4	67.0	84.8	76.2	81.1	np	np	—	76.4

## TAKINGS FROM ACCOMMODATION (\$'000)

<b>2006</b>									
September Quarter	11 130	6 305	13 617	1 586	5 059	np	np	—	38 378
December Quarter	12 528	6 192	13 689	1 567	5 602	np	np	—	39 960
<b>2007</b>									
March Quarter	12 731	6 346	13 032	1 475	5 158	np	np	—	39 148
June Quarter	12 107	5 777	14 034	1 512	4 868	np	np	—	38 661
September Quarter	12 528	6 631	14 708	1 927	5 356	np	np	—	41 655

— nil or rounded to zero (including null cells)

np not available for publication but included in totals where applicable, unless otherwise indicated

(a) Comprising establishments with 40 or more powered sites and cabins, flats, units and villas.

Period	New South Wales	Victoria	Queensland	South Australia	Western Australia	Tasmania	Northern Territory	Australian Capital Territory	Australia
ESTABLISHMENTS (no.)									
<b>2006</b>									
September Quarter	523	401	334	144	198	46	51	3	1 700
December Quarter	522	400	333	143	198	46	51	3	1 696
<b>2007</b>									
March Quarter	520	401	331	143	194	47	50	3	1 689
June Quarter	517	400	331	143	197	47	51	3	1 689
September Quarter	519	401	328	143	196	48	51	3	1 689
ON-SITE VANS (no.)									
<b>2006</b>									
September Quarter	7 992	3 132	3 693	489	1 662	np	152	np	17 372
December Quarter	8 258	2 987	3 643	597	1 625	np	121	np	17 483
<b>2007</b>									
March Quarter	8 235	2 939	3 480	574	1 561	198	110	58	17 155
June Quarter	8 724	3 008	3 455	742	1 648	np	111	np	17 937
September Quarter	8 027	3 278	3 457	510	1 616	np	110	np	17 269
OTHER POWERED SITES (no.)									
<b>2006</b>									
September Quarter	46 217	36 992	24 069	12 530	17 190	np	4 526	np	144 844
December Quarter	46 254	36 869	24 017	12 338	16 923	np	4 586	np	144 274
<b>2007</b>									
March Quarter	45 953	37 034	24 258	12 333	16 756	2 995	4 497	373	144 199
June Quarter	45 257	36 762	24 154	12 042	16 728	np	4 575	np	142 901
September Quarter	45 217	36 389	23 800	12 271	16 875	np	4 616	np	142 530
UNPOWERED SITES (no.)									
<b>2006</b>									
September Quarter	12 136	10 057	6 368	4 605	3 692	np	2 635	np	41 591
December Quarter	11 928	10 099	6 202	4 618	3 641	np	2 791	np	41 392
<b>2007</b>									
March Quarter	11 784	9 950	6 212	4 500	3 500	1 706	2 880	400	40 932
June Quarter	11 870	9 640	6 147	4 462	3 389	np	2 884	np	40 503
September Quarter	11 749	10 093	6 000	4 428	3 381	np	2 956	np	40 708
CABINS FLATS, UNITS AND VILLAS (no.)									
<b>2006</b>									
September Quarter	11 782	6 228	6 052	2 550	3 263	np	1 007	np	31 669
December Quarter	11 836	6 303	6 144	2 577	3 336	np	1 025	np	32 020
<b>2007</b>									
March Quarter	12 180	6 300	6 068	2 636	3 309	705	999	105	32 302
June Quarter	12 176	6 532	6 064	2 642	3 296	np	1 025	np	32 540
September Quarter	12 464	6 579	6 299	2 652	3 247	np	1 030	np	33 089

np not available for publication but included in totals where applicable, unless otherwise indicated

(a) Comprising establishments with 40 or more powered sites and cabins, flats, units and villas.

<i>Period</i>	<i>New South Wales</i>	<i>Victoria</i>	<i>Queensland</i>	<i>South Australia</i>	<i>Western Australia</i>	<i>Tasmania</i>	<i>Northern Territory</i>	<i>Australian Capital Territory</i>	<i>Australia</i>
TOTAL CAPACITY (no.)									
<b>2006</b>									
September Quarter	78 127	56 409	40 182	20 174	25 807	np	8 320	np	235 476
December Quarter	78 276	56 258	40 006	20 130	25 525	np	8 523	np	235 169
<b>2007</b>									
March Quarter	78 152	56 223	40 018	20 043	25 126	5 604	8 486	936	234 588
June Quarter	78 027	55 942	39 820	19 888	25 061	np	8 595	np	233 881
September Quarter	77 457	56 339	39 556	19 861	25 119	np	8 712	np	233 596
PERSONS EMPLOYED (no.)									
<b>2006</b>									
September Quarter	3 199	1 731	1 871	828	1 291	np	574	np	9 824
December Quarter	3 327	1 927	1 838	887	1 276	np	539	np	10 164
<b>2007</b>									
March Quarter	3 281	1 892	1 823	883	1 277	299	553	82	10 090
June Quarter	3 141	1 820	1 882	857	1 316	np	561	np	9 925
September Quarter	3 216	1 813	1 904	875	1 308	np	575	np	10 039
SITES OCCUPIED BY LONG-TERM GUESTS (no.)									
<b>2006</b>									
September Quarter	11 347	5 883	11 042	1 727	4 937	np	654	np	36 036
December Quarter	11 360	5 858	10 705	1 686	4 723	np	559	np	35 320
<b>2007</b>									
March Quarter	11 252	5 909	10 677	1 688	4 742	305	519	150	35 242
June Quarter	11 074	5 782	10 932	1 621	4 993	np	566	np	35 432
September Quarter	11 060	5 791	11 159	1 694	5 052	np	613	np	35 835
OTHER SITES PERMANENTLY RESERVED (no.)									
<b>2006</b>									
September Quarter	20 584	15 524	1 378	2 240	1 909	np	17	np	42 646
December Quarter	20 480	15 268	1 426	2 197	1 870	np	19	np	42 246
<b>2007</b>									
March Quarter	20 306	15 236	1 327	2 144	1 901	991	9	5	41 919
June Quarter	19 866	15 281	1 362	2 088	1 800	np	3	np	41 466
September Quarter	20 394	15 133	1 334	2 172	1 840	np	4	np	41 856
SITE NIGHTS OCCUPIED ('000)									
<b>2006</b>									
September Quarter	3 947.3	2 327.3	2 403.3	643.1	1 319.6	np	401.6	np	11 215.3
December Quarter	4 167.1	2 544.8	1 903.0	730.9	1 120.2	np	167.1	np	10 853.5
<b>2007</b>									
March Quarter	4 337.6	2 834.7	1 776.7	805.2	1 102.6	242.1	116.9	32.3	11 248.2
June Quarter	3 943.4	2 472.3	2 130.0	719.1	1 195.3	np	311.8	np	10 972.2
September Quarter	4 000.1	2 350.8	2 470.8	673.8	1 346.5	np	402.0	np	11 432.8

np not available for publication but included in totals where applicable, unless otherwise indicated

(a) Comprising establishments with 40 or more powered sites and cabins, flats, units and villas.

<i>Period</i>	<i>New South Wales</i>	<i>Victoria</i>	<i>Queensland</i>	<i>South Australia</i>	<i>Western Australia</i>	<i>Tasmania</i>	<i>Northern Territory</i>	<i>Australian Capital Territory</i>	<i>Australia</i>
SITE OCCUPANCY RATE (%)									
<b>2006</b>									
September Quarter	55.0	47.1	65.1	34.7	55.6	np	52.5	np	52.5
December Quarter	57.9	49.6	51.7	39.5	47.9	np	21.3	np	50.3
<b>2007</b>									
March Quarter	61.7	56.1	49.4	44.8	49.2	48.9	16.0	38.4	53.5
June Quarter	55.5	49.4	58.8	40.0	52.5	np	39.9	np	51.8
September Quarter	56.2	47.2	67.9	36.9	58.4	np	50.2	np	53.8
TAKINGS FROM ACCOMMODATION (\$'000)									
<b>2006</b>									
September Quarter	67 102	33 766	58 586	13 738	30 962	np	12 865	np	220 388
December Quarter	85 894	40 513	48 335	17 293	28 960	np	4 807	np	231 153
<b>2007</b>									
March Quarter	94 371	47 280	42 691	19 739	28 089	6 522	4 121	1 198	244 010
June Quarter	74 925	34 434	53 563	16 064	29 326	np	10 461	np	223 245
September Quarter	72 353	36 159	65 200	14 697	34 818	np	12 922	np	239 949

np not available for publication but included in totals where applicable, unless otherwise indicated

(a) Comprising establishments with 40 or more powered sites and cabins, flats, units and villas.



Period	New South Wales	Victoria	Queensland	South Australia	Western Australia	Tasmania	Northern Territory	Australian Capital Territory	Australia
--------	-----------------	----------	------------	-----------------	-------------------	----------	--------------------	------------------------------	-----------

## LETTING ENTITIES (a) (no.)

<b>2006</b>									
September Quarter	97	16	40	8	2	1	—	—	164
December Quarter	96	15	39	8	2	1	—	—	161
<b>2007</b>									
March Quarter	95	16	36	8	2	1	—	—	158
June Quarter	95	15	35	8	2	1	—	—	156
September Quarter	95	15	34	8	2	1	—	—	155

## SINGLE BEDROOM HOLIDAY FLATS, UNITS AND HOUSES (no.)

<b>2006</b>									
September Quarter	405	54	163	np	np	np	—	—	636
December Quarter	413	53	156	np	np	np	—	—	637
<b>2007</b>									
March Quarter	414	52	154	np	np	np	—	—	637
June Quarter	400	50	151	10	np	np	—	—	617
September Quarter	399	44	149	np	np	np	—	—	605

## MULTIPLE BEDROOM HOLIDAY FLATS, UNITS AND HOUSES (no.)

<b>2006</b>									
September Quarter	7 429	1 667	2 877	np	np	np	—	—	12 865
December Quarter	7 500	1 665	2 970	np	np	np	—	—	13 041
<b>2007</b>									
March Quarter	7 585	1 711	2 902	np	np	np	—	—	13 106
June Quarter	7 504	1 661	2 853	719	np	np	—	—	12 913
September Quarter	7 619	1 671	2 779	np	np	np	—	—	12 955

## TOTAL HOLIDAY FLATS, UNITS AND HOUSES (no.)

<b>2006</b>									
September Quarter	7 834	1 721	3 040	np	np	np	—	—	13 501
December Quarter	7 913	1 718	3 126	np	np	np	—	—	13 678
<b>2007</b>									
March Quarter	7 999	1 763	3 056	np	np	np	—	—	13 743
June Quarter	7 904	1 711	3 004	729	np	np	—	—	13 530
September Quarter	8 018	1 715	2 928	np	np	np	—	—	13 560

## BED SPACES (no.)

<b>2006</b>									
September Quarter	42 764	12 140	14 571	np	np	np	—	—	75 757
December Quarter	43 563	11 601	15 359	np	np	np	—	—	76 905
<b>2007</b>									
March Quarter	43 637	12 098	14 927	np	np	np	—	—	77 033
June Quarter	43 079	11 756	14 463	5 616	np	np	—	—	76 027
September Quarter	44 085	11 727	14 094	np	np	np	—	—	76 631

## UNIT NIGHTS OCCUPIED ('000)

<b>2006</b>									
September Quarter	172.9	8.5	145.8	np	np	np	—	—	339.5
December Quarter	228.8	9.8	152.8	np	np	np	—	—	407.4

— nil or rounded to zero (including null cells)

np not available for publication but included in totals where applicable, unless otherwise indicated

(a) The number of managers, owners or real estate agents with 15 or more self-contained units.

<i>Period</i>	<i>New South Wales</i>	<i>Victoria</i>	<i>Queensland</i>	<i>South Australia</i>	<i>Western Australia</i>	<i>Tasmania</i>	<i>Northern Territory</i>	<i>Australian Capital Territory</i>	<i>Australia</i>
UNIT NIGHTS OCCUPIED ('000) <i>cont.</i>									
<b>2007</b>									
March Quarter	263.5	19.6	138.6	np	np	np	—	—	449.1
June Quarter	150.3	8.4	112.8	8.3	np	np	—	—	285.9
September Quarter	173.1	9.0	134.8	np	np	np	—	—	328.7
UNIT OCCUPANCY RATE (%)									
<b>2006</b>									
September Quarter	24.0	5.4	54.2	np	np	np	—	—	27.6
December Quarter	31.4	6.2	53.1	np	np	np	—	—	32.4
<b>2007</b>									
March Quarter	36.6	12.7	50.4	np	np	np	—	—	36.4
June Quarter	20.9	5.7	41.3	12.5	np	np	—	—	23.4
September Quarter	23.5	5.7	50.0	np	np	np	—	—	26.4
UNIT LETTINGS ('000)									
<b>2006</b>									
September Quarter	28.5	4.5	25.8	np	np	np	—	—	61.3
December Quarter	42.1	2.8	38.0	np	np	np	—	—	87.6
<b>2007</b>									
March Quarter	39.0	4.7	29.1	np	np	np	—	—	77.6
June Quarter	23.4	2.2	24.7	4.0	np	np	—	—	55.3
September Quarter	28.3	2.2	25.0	np	np	np	—	—	59.4
AVERAGE LENGTH OF STAY ( <i>days</i> )									
<b>2006</b>									
September Quarter	6.1	1.9	5.7	np	np	np	—	—	5.5
December Quarter	5.4	3.5	4.0	np	np	np	—	—	4.7
<b>2007</b>									
March Quarter	6.8	4.2	4.8	np	np	np	—	—	5.8
June Quarter	6.4	3.7	4.6	2.1	np	np	—	—	5.2
September Quarter	6.1	4.2	5.4	np	np	np	—	—	5.5
TAKINGS FROM ACCOMMODATION (\$'000)									
<b>2006</b>									
September Quarter	15 506	1 573	13 782	np	np	np	—	—	32 234
December Quarter	23 372	1 135	15 600	np	np	np	—	—	41 800
<b>2007</b>									
March Quarter	30 960	2 789	13 315	np	np	np	—	—	50 314
June Quarter	12 545	894	11 137	1 009	np	np	—	—	26 113
September Quarter	16 647	1 633	14 065	np	np	np	—	—	33 643

— nil or rounded to zero (including null cells)

np not available for publication but included in totals where applicable, unless otherwise indicated

Period	New South Wales	Victoria	Queensland	South Australia	Western Australia	Tasmania	Northern Territory	Australian Capital Territory	Australia
--------	-----------------	----------	------------	-----------------	-------------------	----------	--------------------	------------------------------	-----------

## LETTING ENTITIES (a) (no.)

<b>2006</b>									
September Quarter	56	17	306	7	20	7	2	3	418
December Quarter	56	18	304	7	21	7	2	3	418
<b>2007</b>									
March Quarter	56	18	309	7	19	7	2	3	421
June Quarter	58	18	311	7	19	7	2	3	425
September Quarter	59	19	312	7	19	7	2	3	428

## SINGLE BEDROOM HOLIDAY FLATS, UNITS AND HOUSES (no.)

<b>2006</b>									
September Quarter	416	277	2 800	np	np	np	np	np	4 097
December Quarter	419	283	2 812	np	np	np	np	np	4 119
<b>2007</b>									
March Quarter	426	279	2 932	np	np	np	np	np	4 241
June Quarter	459	303	3 001	97	np	np	np	np	4 386
September Quarter	445	303	2 976	np	np	np	np	np	4 378

## MULTIPLE BEDROOM HOLIDAY FLATS, UNITS AND HOUSES (no.)

<b>2006</b>									
September Quarter	1 050	562	7 564	np	np	np	np	np	10 343
December Quarter	1 066	584	7 537	np	np	np	np	np	10 433
<b>2007</b>									
March Quarter	1 065	600	7 748	np	np	np	np	np	10 562
June Quarter	1 100	567	7 699	140	np	np	np	np	10 530
September Quarter	1 133	582	7 754	np	np	np	np	np	10 631

## TOTAL HOLIDAY FLATS, UNITS AND HOUSES (no.)

<b>2006</b>									
September Quarter	1 466	839	10 364	np	np	np	np	np	14 440
December Quarter	1 485	867	10 349	np	np	np	np	np	14 552
<b>2007</b>									
March Quarter	1 491	879	10 680	np	np	np	np	np	14 803
June Quarter	1 559	870	10 700	237	np	np	np	np	14 916
September Quarter	1 578	885	10 730	np	np	np	np	np	15 009

## BED SPACES (no.)

<b>2006</b>									
September Quarter	6 287	3 462	40 356	np	np	np	np	np	58 780
December Quarter	6 551	3 623	40 262	np	np	np	np	np	59 430
<b>2007</b>									
March Quarter	6 506	3 647	41 268	np	np	np	np	np	59 971
June Quarter	6 779	3 609	41 031	990	np	np	np	np	60 127
September Quarter	6 854	3 772	41 926	np	np	np	np	np	61 331

## PERSONS EMPLOYED (no.)

<b>2006</b>									
September Quarter	508	231	1 333	np	np	np	np	np	2 535
December Quarter	518	233	1 289	np	np	np	np	np	2 556

np not available for publication but included in totals where applicable, unless otherwise indicated

(a) The number of owners, managers or real estate agents with 15 or more self-contained units.

<i>Period</i>	<i>New South Wales</i>	<i>Victoria</i>	<i>Queensland</i>	<i>South Australia</i>	<i>Western Australia</i>	<i>Tasmania</i>	<i>Northern Territory</i>	<i>Australian Capital Territory</i>	<i>Australia</i>
PERSONS EMPLOYED (no.) <i>cont.</i>									
<b>2007</b>									
March Quarter	511	208	1 281	np	np	np	np	np	2 473
June Quarter	534	214	1 276	59	np	np	np	np	2 534
September Quarter	537	220	1 265	np	np	np	np	np	2 527
UNIT NIGHTS OCCUPIED ('000)									
<b>2006</b>									
September Quarter	67.3	45.0	691.8	np	np	np	np	np	899.0
December Quarter	82.4	45.9	655.8	np	np	np	np	np	907.3
<b>2007</b>									
March Quarter	86.9	48.0	629.5	np	np	np	np	np	888.1
June Quarter	73.7	42.4	544.9	12.5	np	np	np	np	765.7
September Quarter	79.1	51.1	701.7	np	np	np	np	np	931.8
UNIT OCCUPANCY RATE (%)									
<b>2006</b>									
September Quarter	50.8	58.4	72.6	np	np	np	np	np	67.8
December Quarter	60.1	63.3	68.9	np	np	np	np	np	68.1
<b>2007</b>									
March Quarter	64.7	65.2	65.5	np	np	np	np	np	67.0
June Quarter	51.9	54.6	56.0	58.1	np	np	np	np	56.5
September Quarter	55.3	62.8	71.1	np	np	np	np	np	67.6
UNIT LETTINGS ('000)									
<b>2006</b>									
September Quarter	34.0	10.7	218.7	np	np	np	np	np	299.2
December Quarter	30.1	11.5	246.0	np	np	np	np	np	323.8
<b>2007</b>									
March Quarter	29.4	8.8	225.2	np	np	np	np	np	301.1
June Quarter	27.5	8.7	203.6	3.8	np	np	np	np	275.0
September Quarter	28.0	9.2	241.0	np	np	np	np	np	312.7
AVERAGE LENGTH OF STAY (days)									
<b>2006</b>									
September Quarter	2.0	4.2	3.2	np	np	np	np	np	3.0
December Quarter	2.7	4.0	2.7	np	np	np	np	np	2.8
<b>2007</b>									
March Quarter	3.0	5.4	2.8	np	np	np	np	np	2.9
June Quarter	2.7	4.9	2.7	3.3	np	np	np	np	2.8
September Quarter	2.8	5.5	2.9	np	np	np	np	np	3.0
TAKINGS FROM ACCOMMODATION (\$'000)									
<b>2006</b>									
September Quarter	9 802	6 903	81 278	np	np	np	np	np	107 934
December Quarter	11 074	5 974	85 984	np	np	np	np	np	116 195
<b>2007</b>									
March Quarter	12 223	6 245	78 555	np	np	np	np	np	110 895
June Quarter	8 356	5 186	62 636	1 162	np	np	np	np	87 828
September Quarter	11 504	8 206	84 949	np	np	np	np	np	116 381

np not available for publication but included in totals where applicable, unless otherwise indicated

<i>Period</i>	<i>New South Wales</i>	<i>Victoria</i>	<i>Queensland</i>	<i>South Australia</i>	<i>Western Australia</i>	<i>Tasmania</i>	<i>Northern Territory</i>	<i>Australian Capital Territory</i>	<i>Australia</i>
LETTING ENTITIES (a) (no.)									
<b>2006</b>									
September Quarter	153	33	346	15	22	8	2	3	582
December Quarter	152	33	343	15	23	8	2	3	579
<b>2007</b>									
March Quarter	151	34	345	15	21	8	2	3	579
June Quarter	153	33	346	15	21	8	2	3	581
September Quarter	154	34	346	15	21	8	2	3	583
SINGLE BEDROOM HOLIDAY FLATS, UNITS AND HOUSES (no.)									
<b>2006</b>									
September Quarter	821	331	2 963	107	374	46	np	np	4 733
December Quarter	832	336	2 968	108	375	47	np	np	4 756
<b>2007</b>									
March Quarter	840	331	3 086	104	379	51	np	np	4 878
June Quarter	859	353	3 152	107	395	50	np	np	5 003
September Quarter	844	347	3 125	108	422	48	np	np	4 983
MULTIPLE BEDROOM HOLIDAY FLATS, UNITS AND HOUSES (no.)									
<b>2006</b>									
September Quarter	8 479	2 229	10 441	872	880	144	np	np	23 208
December Quarter	8 566	2 249	10 507	881	949	158	np	np	23 474
<b>2007</b>									
March Quarter	8 650	2 311	10 650	870	862	161	np	np	23 668
June Quarter	8 604	2 228	10 552	859	878	158	np	np	23 443
September Quarter	8 752	2 253	10 533	855	873	156	np	np	23 586
TOTAL HOLIDAY FLATS, UNITS AND HOUSES (no.)									
<b>2006</b>									
September Quarter	9 300	2 560	13 404	979	1 254	190	np	np	27 941
December Quarter	9 398	2 585	13 475	989	1 324	205	np	np	28 230
<b>2007</b>									
March Quarter	9 490	2 642	13 736	974	1 241	212	np	np	28 546
June Quarter	9 463	2 581	13 704	966	1 273	208	np	np	28 446
September Quarter	9 596	2 600	13 658	963	1 295	204	np	np	28 569
BED SPACES (no.)									
<b>2006</b>									
September Quarter	49 051	15 602	54 927	6 166	6 564	890	np	np	134 537
December Quarter	50 114	15 224	55 621	6 217	6 843	1 006	np	np	136 335
<b>2007</b>									
March Quarter	50 143	15 745	56 195	6 198	6 414	986	np	np	137 004
June Quarter	49 858	15 365	55 494	6 606	6 512	996	np	np	136 154
September Quarter	50 939	15 499	56 020	6 596	6 571	1 006	np	np	137 962
UNIT NIGHTS OCCUPIED ('000)									
<b>2006</b>									
September Quarter	240.2	53.6	837.5	20.1	60.3	6.1	np	np	1 238.5
December Quarter	311.2	55.7	808.5	25.0	85.4	10.1	np	np	1 314.7

np not available for publication but included in totals where applicable, unless otherwise indicated

(a) The number of owners, managers or real estate agents with 15 or more self-contained units.

<i>Period</i>	<i>New South Wales</i>	<i>Victoria</i>	<i>Queensland</i>	<i>South Australia</i>	<i>Western Australia</i>	<i>Tasmania</i>	<i>Northern Territory</i>	<i>Australian Capital Territory</i>	<i>Australia</i>
UNIT NIGHTS OCCUPIED ('000) <i>cont.</i>									
<b>2007</b>									
March Quarter	350.4	67.7	768.1	35.5	82.4	14.1	np	np	1 337.2
June Quarter	224.0	50.8	657.7	20.8	73.0	6.4	np	np	1 051.7
September Quarter	252.2	60.1	836.5	18.3	68.9	4.5	np	np	1 260.5
UNIT OCCUPANCY RATE (%)									
<b>2006</b>									
September Quarter	28.2	22.7	68.5	22.3	52.3	34.9	np	np	48.4
December Quarter	36.0	24.2	65.2	27.5	70.1	53.4	np	np	50.8
<b>2007</b>									
March Quarter	41.0	29.6	62.2	40.5	73.8	74.1	np	np	52.2
June Quarter	26.0	22.5	52.7	23.7	63.0	34.1	np	np	40.8
September Quarter	28.6	25.1	66.6	20.6	57.8	23.7	np	np	48.0
UNIT LETTINGS ('000)									
<b>2006</b>									
September Quarter	62.6	15.2	244.5	5.5	23.9	3.1	np	np	360.5
December Quarter	72.3	14.4	284.0	8.0	23.8	4.5	np	np	411.4
<b>2007</b>									
March Quarter	68.3	13.6	254.3	7.5	23.9	7.0	np	np	378.7
June Quarter	50.9	11.0	228.3	7.9	23.0	3.6	np	np	330.3
September Quarter	56.3	11.4	266.0	6.8	24.9	1.8	np	np	372.1
AVERAGE LENGTH OF STAY (days)									
<b>2006</b>									
September Quarter	3.8	3.5	3.4	3.6	2.5	2.0	np	np	3.4
December Quarter	4.3	3.9	2.8	3.1	3.6	2.2	np	np	3.2
<b>2007</b>									
March Quarter	5.1	5.0	3.0	4.8	3.5	2.0	np	np	3.5
June Quarter	4.4	4.6	2.9	2.6	3.2	1.8	np	np	3.2
September Quarter	4.5	5.3	3.1	2.7	2.8	2.4	np	np	3.4
TAKINGS FROM ACCOMMODATION (\$'000)									
<b>2006</b>									
September Quarter	25 308	8 476	95 061	2 046	6 231	531	np	np	140 168
December Quarter	34 447	7 109	101 585	2 662	9 084	1 036	np	np	157 995
<b>2007</b>									
March Quarter	43 183	9 034	91 870	4 340	9 035	1 589	np	np	161 209
June Quarter	20 901	6 080	73 773	2 171	7 868	674	np	np	113 941
September Quarter	28 151	9 839	99 014	1 944	7 584	442	np	np	150 025

np not available for publication but included in totals where applicable, unless otherwise indicated

Period	New South Wales	Victoria	Queensland	South Australia	Western Australia	Tasmania	Northern Territory	Australian Capital Territory	Australia
<b>ESTABLISHMENTS (no.)</b>									
<b>2006</b>									
September Quarter	105	67	118	27	66	22	23	5	433
December Quarter	103	66	118	27	66	21	23	5	429
<b>2007</b>									
March Quarter	102	67	118	27	65	21	22	5	427
June Quarter	101	66	121	27	64	20	22	5	426
September Quarter	101	65	122	29	63	20	21	5	426
<b>BED SPACES (no.)</b>									
<b>2006</b>									
September Quarter	11 749	8 837	13 288	2 400	5 305	1 650	3 202	974	47 405
December Quarter	11 522	8 565	13 057	2 403	5 433	1 573	3 128	950	46 631
<b>2007</b>									
March Quarter	11 573	8 727	13 043	2 406	5 355	1 629	3 058	979	46 770
June Quarter	11 483	8 647	13 561	2 388	5 343	1 500	3 119	958	46 999
September Quarter	11 480	8 504	13 755	2 867	5 197	1 500	2 877	977	47 157
<b>PERSONS EMPLOYED (no.)</b>									
<b>2006</b>									
September Quarter	727	472	1 185	114	312	129	227	84	3 250
December Quarter	693	484	1 160	118	331	148	239	98	3 271
<b>2007</b>									
March Quarter	685	475	1 160	111	307	146	242	105	3 231
June Quarter	663	473	1 203	105	340	126	257	105	3 272
September Quarter	677	495	1 244	128	307	135	266	102	3 354
<b>GUEST NIGHTS OCCUPIED (no.)</b>									
<b>2006</b>									
September Quarter	511 916	259 589	714 807	63 126	224 526	14 258	190 182	53 242	2 031 646
December Quarter	680 977	348 257	660 697	83 465	283 382	31 148	124 247	43 334	2 255 507
<b>2007</b>									
March Quarter	700 712	438 644	612 772	90 311	302 160	59 665	100 497	46 271	2 351 032
June Quarter	532 261	295 251	695 990	67 383	285 822	27 859	126 389	38 275	2 069 230
September Quarter	495 124	271 884	717 354	100 259	236 868	16 549	166 878	43 351	2 048 267
<b>BED OCCUPANCY RATE (%)</b>									
<b>2006</b>									
September Quarter	47.4	32.4	58.8	29.6	46.2	9.4	64.6	59.4	46.9
December Quarter	64.8	45.3	55.3	37.8	56.7	23.8	43.6	49.6	53.2
<b>2007</b>									
March Quarter	67.5	56.4	52.8	41.7	62.7	40.7	38.0	52.5	56.3
June Quarter	51.1	37.7	56.5	31.0	58.8	20.8	44.8	43.9	48.5
September Quarter	47.1	35.1	57.3	38.0	49.5	12.0	63.0	48.2	47.5
<b>GUEST ARRIVALS (no.)</b>									
<b>2006</b>									
September Quarter	192 067	78 822	278 488	25 587	68 647	8 800	90 765	22 186	765 362
December Quarter	185 071	94 166	246 836	30 231	82 855	17 913	61 579	25 980	744 631
<b>2007</b>									
March Quarter	221 122	122 724	264 176	34 474	96 105	30 034	54 296	27 486	850 417
June Quarter	170 236	80 005	295 783	26 550	73 975	14 023	55 628	17 538	733 738
September Quarter	156 877	74 342	278 740	43 263	65 532	10 070	55 978	20 381	705 183

(a) Comprising establishments with 25 or more bed spaces.

<i>Period</i>	<i>New South Wales</i>	<i>Victoria</i>	<i>Queensland</i>	<i>South Australia</i>	<i>Western Australia</i>	<i>Tasmania</i>	<i>Northern Territory</i>	<i>Australian Capital Territory</i>	<i>Australia</i>
<b>AVERAGE LENGTH OF STAY (days)</b>									
<b>2006</b>									
September Quarter	2.7	3.3	2.6	2.5	3.3	1.6	2.1	2.4	2.7
December Quarter	3.7	3.7	2.7	2.8	3.4	1.7	2.0	1.7	3.0
<b>2007</b>									
March Quarter	3.2	3.6	2.3	2.6	3.1	2.0	1.9	1.7	2.8
June Quarter	3.1	3.7	2.4	2.5	3.9	2.0	2.3	2.2	2.8
September Quarter	3.2	3.7	2.6	2.3	3.6	1.6	3.0	2.1	2.9
<b>TAKINGS FROM ACCOMMODATION (\$'000)</b>									
<b>2006</b>									
September Quarter	13 748	6 925	15 937	1 263	4 952	287	4 572	1 471	49 155
December Quarter	19 016	9 049	14 854	1 730	6 457	644	2 768	1 235	55 751
<b>2007</b>									
March Quarter	18 513	11 293	14 204	1 985	6 622	1 240	2 103	1 400	57 361
June Quarter	14 720	7 735	15 919	1 444	6 468	560	3 095	1 107	51 049
September Quarter	13 687	7 220	16 774	2 308	5 442	374	4 254	1 215	51 274

(a) Comprising establishments with 25 or more bed spaces.



## EXPLANATORY NOTES

- INTRODUCTION**
- 1** This publication presents data from the quarterly Survey of Tourist Accommodation (STA). The STA is a mailout collection that completely enumerates all in-scope accommodation establishments within Australia.
- SCOPE**
- 2** From March quarter 2005, the scope of the STA comprises the following categories of establishments:
- licensed hotels and resorts with facilities and 5 or more rooms
  - motels, private hotels and guest houses with facilities and 5 or more rooms
  - serviced apartments with 5 or more units
  - caravan parks with 40 or more powered sites
  - holiday flats, units and houses of letting entities with 15 or more rooms or units
  - visitor hostels with 25 or more bed spaces.
- 3** With the exception of caravan parks, these establishments provide predominantly short-term non-residential accommodation, i.e. accommodation which is not leased, and which is provided to guests who would generally stay for periods of less than two months. Some of these establishments also provide long-term residential accommodation. The amount of such activity is considered to be insignificant and is included in the data presented in this publication.
- 4** Caravan parks provide either short-term or long-term accommodation. If a caravan park has the majority of sites occupied by paying guests who have stayed continuously for two months or more during the survey period, the caravan park is classified as long-term. Data for caravan parks are presented by short-term and long-term in this publication.
- 5** Previous to March quarter 2005, the scope of the STA comprised:
- licensed hotels and resorts with facilities and 15 or more rooms
  - motels, private hotels and guest houses with facilities and 15 or more rooms
  - serviced apartments with 15 or more units.
- 6** For the four quarters of 2000 and 2003, the scope of the STA was expanded to include:
- caravan parks with 40 or more powered sites
  - holiday flats, units and houses of letting entities with 15 or more rooms or units
  - visitor hostels with 25 or more bed spaces.
- COVERAGE**
- 7** The main source of coverage is from the Australian Automobile Association through AAA Tourism Pty Ltd. This is supplemented by notification of new tourism developments and their likely opening dates in selected guides, major tourism journals and periodicals and newspapers. Periodic comparison with lists of accommodation establishments provided by the various tourism organisations and industry associations is also undertaken.
- TAKINGS FROM ACCOMMODATION**
- 8** From 1 July 2000, takings from accommodation include gross revenue from the provision of accommodation, including GST. Takings from meals are excluded. Where businesses are unable to provide the data inclusive of GST, it is automatically adjusted by the ABS prior to aggregation and release in output.
- STAR GRADING**
- 9** Star grade classifications of establishments are continuously revised by AAA Tourism Pty Ltd. This should be taken into account when making comparisons over time. Any queries regarding the star grading process should be directed to AAA Tourism Pty Ltd on (03) 8601 2200 or email <enquiries@aaatourism.com.au>.
- 10** Data by star grade for states and territories are included in the data cubes that accompany this publication: Tourist Accommodation, Small Area Data (cat. no. 8635.0.55.002 for national data and cat. no. 8635.1.55.001 – 8635.8.55.001 for state/territory data).

## EXPLANATORY NOTES *continued*

### STATISTICAL GEOGRAPHY

**11** Small area statistics for 2007 are classified to the Australian Standard Geographical Classification (ASGC), 2006 Edition (cat. no. 1216.0). Data are coded to the statistical local area (SLA) level.

**12** These SLA data are aggregated to tourism regions as defined by relevant state and territory tourism organisations. Tourism regions are reviewed annually and are subject to boundary and name changes. Where changes have occurred care should be taken when making comparisons with previously published data at this level.

**13** Data by tourism regions are no longer presented in this publication. Small area data are provided in the data cubes that accompany this publication: *Tourist Accommodation, Small Area Data* (cat. no. 8635.0.55.002 for national data and cat. no. 8635.1.55.001 – 8635.8.55.001 for state/territory data).

**14** Details of SLAs, the composition of tourism regions and maps of tourism regions are provided in the ABS publication *Tourism Region Maps and Concordance Files, Australia* (cat. no. 9503.0.55.001) available from the ABS web site <[www.abs.gov.au](http://www.abs.gov.au)>.

### DATA QUALITY

**15** The survey does not have a sample component and the data are not subject to sampling variability. However, other inaccuracies collectively referred to as non-sampling error may affect the data. These non-sampling errors may arise from a number of sources, including:

- errors in the reporting of data by providers
- errors in the process of capturing data
- imputation for missing data
- definition and classification errors
- incomplete coverage.

**16** Every effort has been made to reduce non-sampling error to a minimum by careful design and testing of questionnaires, and efficient operating procedures and systems used to compile statistics.

## EXPLANATORY NOTES *continued*

*Response rates*

**17** The response rates for Australia for the most recent quarters are shown below:

### RESPONSE RATES

<i>Activity</i>	<i>Sep</i> <i>Qtr</i> <i>2006</i>	<i>Dec</i> <i>Qtr</i> <i>2006</i>	<i>Mar</i> <i>Qtr</i> <i>2007</i>	<i>Jun</i> <i>Qtr</i> <i>2007</i>	<i>Sep</i> <i>Qtr</i> <i>2007</i>
	%	%	%	%	%
Licensed hotels with facilities					
with 5 to 14 rooms	76.5	84.7	86.2	83.0	83.2
with 15 or more rooms	88.6	88.6	92.2	87.8	90.1
with 5 or more rooms	84.3	87.2	90.1	85.4	87.7
Motels and guest houses					
with 5 to 14 rooms	84.9	92.4	91.2	89.9	87.9
with 15 or more rooms	89.3	87.1	89.2	89.2	89.8
with 5 or more rooms	87.9	88.7	89.8	89.5	89.2
Serviced apartments					
with 5 to 14 rooms	88.0	93.8	93.5	90.5	88.4
with 15 or more rooms	93.6	90.9	93.3	92.3	92.3
with 5 or more rooms	92.0	91.7	93.3	91.4	91.2
Hotels, motels and serviced apartments					
with 5 to 14 rooms	83.5	90.9	90.5	88.4	86.9
with 15 or more rooms	90.1	88.2	90.7	89.5	90.4
with 5 or more rooms	88.0	89.0	90.6	88.9	89.3
Caravan parks	90.9	87.8	93.1	89.8	90.3
Holiday flats, units and houses	90.2	91.4	93.1	93.6	88.7
Visitor hostels	91.5	83.7	85.2	90.4	90.6

*Imputation rates*

**18** Missing data items are replaced by imputed values based on reported data. Average quarterly movements are applied to previously reported data for each non-responding unit to estimate values for missing data items. Only if previously reported data are not available, then data from a similar unit is used as a 'donor' for the missing data items.

## EXPLANATORY NOTES *continued*

*Imputation rates continued*

**19** The imputation rates for Australia for the most recent quarters are shown below:

### IMPUTATION RATES, Nights occupied(a)

Activity	Sep	Dec	Mar	Jun	Sep
	Qtr	Qtr	Qtr	Qtr	Qtr
	2006	2006	2007	2007	2007
	%	%	%	%	%
Licensed hotels with facilities					
with 5 to 14 rooms	21.9	15.1	12.6	17.8	15.2
with 15 or more rooms	3.4	3.8	1.7	3.7	2.3
with 5 or more rooms	3.9	4.1	2.0	4.1	2.7
Motels and guest houses					
with 5 to 14 rooms	13.7	7.5	7.6	9.2	11.4
with 15 or more rooms	8.4	9.8	7.8	8.7	7.6
with 5 or more rooms	8.9	9.6	7.8	8.7	7.9
Serviced apartments					
with 5 to 14 rooms	11.9	5.0	5.0	7.6	9.8
with 15 or more rooms	3.8	5.4	4.6	5.2	4.6
with 5 or more rooms	4.2	5.4	4.6	5.3	4.8
Hotels, motels and serviced apartments					
with 5 to 14 rooms	15.0	8.4	8.1	10.5	11.8
with 15 or more rooms	5.3	6.3	4.5	5.9	4.8
with 5 or more rooms	5.8	6.4	4.7	6.1	5.1
Caravan parks	7.3	10.8	6.2	7.4	7.7
Holiday flats, units and houses	9.1	6.8	4.7	5.2	10.5
Visitor hostels	8.6	14.6	11.0	9.0	7.6

(a) Based on room nights for hotels, motels and serviced apartments; site nights for caravan parks; unit nights for holiday flats, units and houses; and guest nights for visitor hostels

### IMPUTATION RATES, Takings from accommodation

Activity	Sep	Dec	Mar	Jun	Sep
	Qtr	Qtr	Qtr	Qtr	Qtr
	2006	2006	2007	2007	2007
	%	%	%	%	%
Licensed hotels with facilities					
with 5 to 14 rooms	21.6	16.2	13.8	18.5	15.2
with 15 or more rooms	2.8	3.7	1.2	2.7	1.6
with 5 or more rooms	3.0	3.9	1.3	2.9	1.8
Motels and guest houses					
with 5 to 14 rooms	13.5	8.2	8.2	9.2	10.9
with 15 or more rooms	7.7	9.3	7.1	8.2	7.1
with 5 or more rooms	8.2	9.2	7.2	8.3	7.4
Serviced apartments					
with 5 to 14 rooms	10.6	5.8	5.2	7.5	9.8
with 15 or more rooms	3.3	4.8	4.0	4.7	4.0
with 5 or more rooms	3.5	4.9	4.1	4.8	4.3
Hotels, motels and serviced apartments					
with 5 to 14 rooms	13.9	8.7	8.2	10.1	11.2
with 15 or more rooms	4.2	5.4	3.4	4.7	3.7
with 5 or more rooms	4.6	5.6	3.6	4.9	4.0
Caravan parks	7.0	10.8	5.1	8.1	7.6
Holiday flats, units and houses	9.1	7.1	4.0	4.8	9.9
Visitor hostels	7.9	13.4	9.3	8.3	7.0

BREAK IN TIME SERIES

**20** In June quarter 2003, the ABS identified 132 licensed hotels with facilities, motels and guest houses and serviced apartments with 15 or more rooms which had been operating for a number of quarters but were not on the STA frame. These additional establishments were included in the STA from June quarter 2003.

## EXPLANATORY NOTES *continued*

### BREAK IN TIME SERIES

*continued*

**21** The ABS also identified 74 caravan parks which were operating in the March quarter 2003 but were not on the STA frame. These caravan parks were included in the June, September and December quarter 2003 data, but not in the March quarter 2003 data.

**22** The addition of these establishments resulted in a break in time series between March and June quarters 2003. The impact of the break in time series for hotels, motels and serviced apartments is explained in Appendix 1, *Tourist Accommodation, Australia, December quarter 2003* (cat. no. 8635.0). The impact of the break in series for caravan parks is explained in the Appendix of *Tourist Accommodation, Australia, Expanded Scope Collection, Year ended 31 December quarter 2003* (cat. no. 8635.0.55.001). Particular care needs to be taken for all calculations of percentage changes that cross the break in series.

### SEASONAL ADJUSTMENT

**23** Seasonal adjustment is a means of removing the estimated effects of normal seasonal variation from the original time series so that the effect of other influences on the series may be more clearly recognised. Seasonal adjustment procedures do not aim to remove the irregular or non-seasonal influences which may be present in any particular quarter. Irregular influences that are highly volatile can make it difficult to interpret the movement of the series even after adjustment for seasonal variation, and cannot be assumed to indicate changes in the trend.

**24** The way in which seasonally adjusted and trend estimates were calculated changed from a Forward Factor methodology to a Concurrent methodology in March quarter 2003. The Forward Factor method relied on an annual analysis of the original time series to estimate seasonal factors that were to be applied in the forthcoming four quarters. Under this method the projected seasonal factors, or forward factors, were not updated until the next annual analysis. The Concurrent methodology uses the most up to date original time series available at each reference period to estimate seasonal factors thus eliminating the need to use projected seasonal factors.

### TREND ESTIMATES

**25** Smoothing the seasonally adjusted series reduces the impact of the irregular component of the seasonally adjusted series and creates the trend estimates. The trend estimates are derived by applying a 7-term Henderson moving average to the quarterly seasonally adjusted series. The Henderson moving average used in the middle of the time series is symmetric but, as the end of a time series is approached, asymmetric forms of the symmetric moving average are applied. Unlike the weights of the standard 7-term Henderson moving average, the weights used with the quarterly data have been tailored to suit the particular characteristics of individual series.

**26** While these techniques enable trend estimates for the latest period to be produced, the process does result in revisions to the trend estimates in recent quarters, particularly as additional original estimates become available. For further information refer to *Information Paper: A Guide to Interpreting Time Series - Monitoring Trends, 2003* (cat. no. 1349.0) available at the ABS web site <[www.abs.gov.au](http://www.abs.gov.au)>.

### CONFIDENTIALISATION OF DATA

**27** Under the Census and Statistics Act, when releasing statistics the ABS is required to do this in a manner that is "not likely" (in a legal sense) to enable the identification of a particular person or organisation. A number of techniques are used to do this, including suppression of information. To ensure provider confidentiality in the Survey of Tourist Accommodation, the ABS uses a computerised process known as Disclosure Avoidance Analysis System (DAAS) to confidentialise the entire tourist accommodation dataset each quarter. This process not only ensures that data are suppressed to ensure individual establishments cannot be identified, but also suppresses data in other (consequential) cells to ensure data cannot be derived through deduction from the information available.

## EXPLANATORY NOTES *continued*

### CONFIDENTIALISATION OF DATA *continued*

**28** While the scope and coverage of the Survey of Tourist Accommodation has been expanded, priority has been given to maintaining the integrity and continuity of the core collection (hotels, motels and guest houses, and serviced apartments with 15 or more rooms). In order to maximise data released from the core collection series and the new components of the expanded scope collection (hotels, motels and guest houses, and serviced apartments with 5-14 rooms), the 'total' series (5 or more rooms) has been used for any consequential confidentiality required where possible.

**29** The DAAS process begins by confidentialising at the Statistical Local Area (SLA) level, then across Tourism regions, then at the state level and finally the national level. If there is an SLA that has been made confidential then another SLA will have to be made confidential within that Tourism region to protect the confidentiality of the providers in the SLA that was originally made confidential. Depending on the number of SLAs in the Tourism region the whole Tourism region may need to be made confidential. As a consequence of this, at least one more Tourism region within a state or territory will also be confidentialised. This may also occur at the state/territory level.

### USER AGGREGATION OF DATA

**30** The aggregation of data by users across time periods should be undertaken with caution, due to the possibility of non-inclusion of confidentialised data (see the above section for more information about confidentialisation). Where one or more cells contributing to a total have been confidentialised (ie, contains the value of n.p.), the resulting aggregated total will be incorrect. However, some broader levels of data may not be affected by confidentialised cells.

**31** Where data can be aggregated (ie, no confidentialised cells are included) for calendar and financial year/s purposes, the data items Establishments, Rooms, Persons employed and Bed spaces should not be aggregated. For these items it is recommended that for calendar years, the value of the December quarter is used, and for financial years, the value of the June quarter is used.

**32** Any data items that have been derived from other items collected in the survey cannot be aggregated (ie, all those with labels ending in 'rate' or commencing with 'average'). These items must be re-derived based on the aggregation of each of the quarterly items collected in the survey used in the derivation of the rate or average (see Glossary for formulas).

**33** Users are cautioned against deriving any non-standard aggregations (eg, aggregation of selected star gradings such as 4-star and 5-star; aggregation of selected geographical areas such as capital city areas and balance of state; aggregation of selected activities such as hotels and motels combined). This is because data are confidentialised based on the standard data item structure.

### EFFECTS OF ROUNDING

**34** Where figures have been rounded, discrepancies may occur between totals and the sum of the component items.

### RELATED PUBLICATIONS

**35** Other ABS publications and products which may be of interest are outlined below. Please note, older publications may no longer be available through ABS bookshops but

## EXPLANATORY NOTES *continued*

### RELATED PUBLICATIONS

*continued*

are available through ABS libraries. All publications released from 1998 onwards are available on the ABS web site <[www.abs.gov.au](http://www.abs.gov.au)>.

*Tourist Accommodation, Small Area Data* (cat. no. 8635.0.55.002) (data cube for Australia – issued quarterly)

*Tourist Accommodation, Small Area Data* (cat. no. 8635.1.55.001–8635.8.55.001) (data cubes for each state/territory – issued quarterly)

*Tourism Region Maps and Concordance Files, Australia* (cat. no. 9503.0.55.001) (annual)

*Tourist Accommodation, Australia, Expanded Scope Collection* (cat. no. 8635.0.55.001) (irregular)

*Short-term Visitor Arrivals Estimates, Australia* (cat. no. 3401.0.55.001) (issued monthly)

*Overseas Arrivals and Departures, Australia* (cat. no. 3401.0) (issued monthly)

*Australian National Accounts, Tourism Satellite Account* (cat. no. 5249.0) (annual)

**36** The catalogue of current publications and other products is available from the ABS web site <[www.abs.gov.au](http://www.abs.gov.au)>. The ABS also issues a daily Release Advice on the web site which details products to be released in the week ahead.

### ABS DATA AVAILABLE ON REQUEST

**37** As well as the statistics included in this publication, the ABS has other relevant data available on request. Inquiries should be made to the National Information and Referral Service on 1300 135 070.

## GLOSSARY

<b>Average length of stay</b>	<p>Average number of days each guest stayed during the reference period. It is a derived item calculated by dividing the number of guest nights occupied by the number of guest arrivals with the result expressed as a number of days,</p> $\text{Average length of stay(days)} = \frac{\text{Guest nights occupied}}{\text{Guest arrivals}}$
<b>Average takings per available room night</b>	<p>The takings from accommodation divided by the total number of room nights available for the survey period,</p> $\text{Average takings per available room night(\$)} = \frac{\text{Takings from accommodation}}{\text{Room nights available}}$
<b>Average takings per room night occupied</b>	<p>The takings from accommodation divided by the total number of room nights occupied for the survey period,</p> $\text{Average takings per room night occupied(\$)} = \frac{\text{Takings from accommodation}}{\text{Room nights occupied}}$
<b>Bed occupancy rate</b>	<p>The bed occupancy rate represents bed occupancy expressed as a percentage of total capacity available during the survey period,</p> $\text{Bed occupancy rate (\%)} = \frac{\text{Guest nights occupied}}{\text{Guest nights available}} * 100$
<b>Bed spaces</b>	<p>The maximum number of bed spaces normally in place available to accommodate paying guests during the survey period. Three-quarter beds are counted as one bed space; double beds as two bed spaces. Cots and divans not normally used as beds are excluded.</p>
<b>Cabins, flats, units and villas</b>	<p>The maximum number of cabins, flats, units and villas available at caravan parks for accommodating paying guests during the survey period.</p>
<b>Capacity</b>	<p>Capacity in terms of rooms/units/apartments/suites, visitor hostel bed spaces, holiday flats/units/houses or caravan park sites is the maximum number available to accommodate paying guests on the last day of the survey period. Capacity closed temporarily for seasonal reasons is included.</p>
<b>Caravan park sites</b>	<p>The measure of total caravan park capacity available for accommodating paying guests during the survey period. Includes on-site vans, other powered sites, unpowered sites and cabins, flats, units and villas.</p>
<b>Caravan parks</b>	<p>Establishments with 40 or more powered sites and cabins, flats, units and villas which provide either short-term or long-term accommodation to the general public and which provide powered sites for caravans and toilet, shower and laundry facilities for guests.</p>
<b>Caravan parks, long-term</b>	<p>Caravan parks where the majority of paying guests occupied sites for periods of two months or more.</p>
<b>Caravan parks, short-term</b>	<p>Caravan parks where the majority of paying guests occupied sites for periods of less than two months.</p>
<b>Establishments</b>	<p>The number of licensed hotels and resorts, motels and guest houses, serviced apartments, caravan parks and visitor hostels within the scope of the survey which operated for any part of the survey period, or which closed temporarily for the quarter for seasonal reasons.</p>
<b>Guest arrivals</b>	<p>The total number of paying guests counted only on the first night they stayed at the accommodation establishment during the survey period.</p> <p>For holiday flats, units and houses this is the same as unit lettings.</p> <p>This data item is not collected for caravan parks.</p>
<b>Guest nights available</b>	<p>The total number of nights available to all paying guests during the survey period.</p> <p>This is derived from the number of bed spaces multiplied by the number of days for which they were available during the survey period. For establishments closing (other than for seasonal reasons) or opening during this period, operating periods only are included.</p>



## GLOSSARY *continued*

<b>Guest nights occupied</b>	The total number of paying guests counted on each night they stayed at the accommodation establishment during the survey period.
<b>Holiday flats, units and houses</b>	The total number of holiday flats, units and houses (excluding establishments predominantly operated on a time-share basis) operated by letting entities (i.e. owners, managers or real estate agents) who have sole letting rights to at least 15 flats, units or houses for short-term letting. These flats, units or houses should be mainly self-contained in terms of cooking, bath (or shower) and toilet facilities and should not have breakfast available for guests. Data for holiday flats, units or houses include short-term owner operators as well as paying guest accommodation.
<b>Hotels</b>	See licensed hotels and resorts with facilities.
<b>Letting entities</b>	For holiday flats, units and houses, the number of owners, managers or real estate agents within the scope of the survey who operated for any part of the survey period.
<b>Licensed hotels and resorts with facilities</b>	Establishments with five or more rooms which are licensed to operate a public bar and which provide accommodation on a room/suite basis, with a bath/shower and toilet in most guest rooms, but which do not have full cooking facilities (i.e. hot plates and oven/microwave) in most guest rooms.
<b>Motels, private hotels and guest houses with facilities</b>	Establishments with five or more rooms which are not licensed to operate a public bar, and which provide accommodation on a room/suite basis, with a bath/shower and toilet in most guest rooms, but which do not have full cooking facilities (i.e. hot plates and oven/microwave) in most guest rooms.
<b>Multiple bedroom holiday flats, units and houses</b>	The total number of holiday flats, units and houses available with multiple bedrooms.
<b>Occupancy</b>	Occupancy in terms of room nights, unit nights or site nights occupied refers to the total number of nights each room, unit or caravan park was occupied during the survey period.  Occupancy in terms of guest nights refers to the total number of paying guests counted on each night they stayed at the accommodation establishment during the survey period.
<b>On-site vans</b>	The maximum number of vans owned or leased by the establishment for the purpose of providing accommodation to the general public.
<b>Other powered sites</b>	The maximum number of sites with provision for connection to electric power supply, available at caravan parks for accommodating paying guests during the survey period, excluding powered sites occupied by on-site vans, and cabins, flats, units and villas.
<b>Other sites permanently reserved</b>	The total number of powered and unpowered sites, on-site vans and cabins, flats, units and villas continuously let for two months or more on the last day of the survey period to tenants who occupy the sites only on a casual or sporadic basis.
<b>Persons employed</b>	The total number of persons working at each accommodation establishment at the end of the survey period (including working proprietors and those working on other than accommodation activities). This data item is not applicable to holiday flats, units and houses let by real estate agents.
<b>Room nights available</b>	The number of rooms/units available multiplied by the number of days for which they were available during the survey period. For establishments closing (other than for seasonal reasons) or opening during this period, operating periods only are included.
<b>Room nights occupied</b>	The number of nights each guest room/unit was occupied by a paying guest during the survey period.
<b>Room occupancy rate</b>	The room occupancy rate represents room occupancy expressed as a percentage of total capacity available during the survey period, $\text{Room occupancy rate (\%)} = \frac{\text{Room nights occupied}}{\text{Room nights available}} * 100$

## GLOSSARY *continued*

<b>Room occupancy rate</b> <i>continued</i>	providing that, for establishments closing (other than for seasonal reasons) or opening during the survey period, the denominator of the above expression includes only operating periods.
<b>Rooms</b>	The maximum number of rooms available for accommodating short-term paying guests at each licensed hotel and resort, motel and guest house and serviced apartment during the survey period. Units, apartments and suites are treated as rooms for these types of establishments in these survey results.
<b>Serviced apartments</b>	Establishments with five or more units which mostly comprise self-contained units at the same location, and which are available on a unit/apartment basis to the general public for a minimum of one night. The units should have full cooking facilities (i.e. hot plates and oven/microwave), refrigerator and bath/shower and toilet facilities; all bed linen and towels should be provided, and daily servicing (i.e. cleaning and bed making) must be available through the on-site management, although this service may not necessarily be used.
<b>Single bedroom holiday flats, units and houses</b>	The total number of holiday flats, units and houses available with a single bedroom.
<b>Site nights available</b>	The number of caravan park sites available multiplied by the number of days for which they were available during the survey period. For establishments closing (other than for seasonal reasons) or opening during this period, operating periods only are included.
<b>Site nights occupied</b>	The total number of nights each caravan park site was occupied during the survey period.
<b>Site occupancy rate</b>	<p>The site occupancy rate for caravan parks represents site occupancy expressed as a percentage of total capacity available during the survey period,</p> $\text{Site occupancy rate (\%)} = \frac{\text{Site nights occupied}}{\text{Site nights available}} * 100$ <p>providing that, for establishments closing (other than for seasonal reasons) or opening during the survey period, the denominator of the above expression includes only operating periods.</p>
<b>Sites occupied by long-term guests</b>	The total number of caravan park sites occupied on the last day at the end of the survey period by guests who have stayed continuously for two months or more.
<b>Star grading</b>	<p>The grading of hotels, motels and guest houses with facilities and serviced apartments is based on the classification system owned by AAA Tourism Pty Ltd. The gradings are allocated according to a points system based on the amenities and facilities available to guests. Details of the grading scheme are contained in the publication <i>Accommodation Guide</i> published by AAA Tourism Pty Ltd for each of the individual Australian Motoring Organisations. For the purpose of classifying establishments to a star grading in this publication, 'half' star gradings are ignored (e.g. a two and a half star grading has been shown as two star).</p> <p>While coverage has significantly improved, some establishments (including some competing in the four and five star markets and having significant takings) still remain outside the star grading scheme. These establishments have been given a star grading of 'ungraded'.</p>
<b>Takings from accommodation</b>	<p>Since 1 July 2000, takings from accommodation include gross revenue from the provision of accommodation, including GST. Takings from meals are excluded. In cases where takings from accommodation data cannot be provided inclusive of GST the amount of GST payable is estimated and the data revised accordingly.</p> <p>Takings from accommodation for each month generally represent the takings received during that month. Where payments are received in advance of, or after the provision of accommodation to guests, the monthly figure for takings from accommodation may not necessarily bear a direct relationship to the number of guests accommodated during the month.</p>

## GLOSSARY *continued*

<b>Unit lettings</b>	The total number of times a holiday flat, unit or house was occupied by a new tenant, counted only on the first night it was occupied by the new tenant. This is the equivalent of guest arrivals.
<b>Unit nights available</b>	The number of holiday flats, units and houses available multiplied by the number of days for which they were available during the survey period. For establishments closing (other than for seasonal reasons) or opening during this period, operating periods only are included.
<b>Unit nights occupied</b>	The total number of nights each holiday flat, unit or house was occupied during the survey period.
<b>Unit occupancy rate</b>	<p>The unit occupancy rate for holiday flats, units and houses represents unit occupancy expressed as a percentage of total capacity available during the survey period,</p> $\text{Unit occupancy rate (\%)} = \frac{\text{Unit nights occupied}}{\text{Unit nights available}} * 100$ <p>providing that, for letting entities closing (other than for seasonal reasons) or opening during the survey period, the denominator of the above expression includes only operating periods.</p>
<b>Unpowered sites</b>	The maximum number of sites with no provision for connection to electric power supply, available at caravan parks for accommodating paying guests during the survey period.
<b>Visitor hostels</b>	Establishments with 25 or more bed spaces which provide accommodation to visitors on a bed basis (rather than by room). This category does not include establishments providing charity type accommodation (e.g. Salvation Army hostels) nor hotels, motels and guest houses without in-room facilities which provide accommodation on a per room basis.

## FOR MORE INFORMATION . . .

- INTERNET*      **www.abs.gov.au** the ABS website is the best place for data from our publications and information about the ABS.
- LIBRARY*      A range of ABS publications are available from public and tertiary libraries Australia wide. Contact your nearest library to determine whether it has the ABS statistics you require, or visit our website for a list of libraries.

## INFORMATION AND REFERRAL SERVICE

Our consultants can help you access the full range of information published by the ABS that is available free of charge from our website, or purchase a hard copy publication. Information tailored to your needs can also be requested as a 'user pays' service. Specialists are on hand to help you with analytical or methodological advice.

- PHONE*            1300 135 070
- EMAIL*            client.services@abs.gov.au
- FAX*                1300 135 211
- POST*               Client Services, ABS, GPO Box 796, Sydney NSW 2001

## FREE ACCESS TO STATISTICS

All statistics on the ABS website can be downloaded free of charge.

- WEB ADDRESS*    [www.abs.gov.au](http://www.abs.gov.au)



2863500009076

ISSN 1031 0770

RRP \$31.00